

MONOPHASIC CYLINDRICAL

- Ø 3.5
- Ø 4.0
- Ø 4.5
- Ø 5.0
- Ø 5.5

NORMAL

	8 mm	9 mm	10 mm	11 mm	12 mm
○	EF12S.3.5-8	EF12S.3.5-9	EF12S.3.5-10	EF12S.3.5-11	EF12S.3.5-12
○	EF12S.4.0-8	EF12S.4.0-9	EF12S.4.0-10	EF12S.4.0-11	EF12S.4.0-12
○	EF12S.4.5-8	EF12S.4.5-9	EF12S.4.5-10	EF12S.4.5-11	EF12S.4.5-12
○	EF12S.5.0-8	EF12S.5.0-9	EF12S.5.0-10	EF12S.5.0-11	EF12S.5.0-12
○	EF12S.5.5-8	EF12S.5.5-9	EF12S.5.5-10	EF12S.5.5-11	EF12S.5.5-12

LONG

	13 mm	14 mm	15 mm	16 mm	18 mm
○	EF12S.3.5-13	EF12S.3.5-14	EF12S.3.5-15	EF12S.3.5-16	EF12S.3.5-18
○	EF12S.4.0-13	EF12S.4.0-14	EF12S.4.0-15	EF12S.4.0-16	EF12S.4.0-18
○	EF12S.4.5-13	EF12S.4.5-14	EF12S.4.5-15	EF12S.4.5-16	EF12S.4.5-18
○	EF12S.5.0-13	EF12S.5.0-14	EF12S.5.0-15	EF12S.5.0-16	EF12S.5.0-18
○	EF12S.5.5-13	EF12S.5.5-14	EF12S.5.5-15	EF12S.5.5-16	EF12S.5.5-18





PROTECTION CAP
SINGLE TOOTH

CODE
EF36.3.5
EF36.4.0
EF36.4.5
EF36.5.0
EF36.5.5



Ø 3.5

Ø 4.0

Ø 4.5

Ø 5.0

Ø 5.5

DRILLS FOR CYLINDRICAL IMPLANT (TRADITIONAL SURGERY)

- Ø 3.5
- Ø 4.0
- Ø 4.5
- Ø 5.0
- Ø 5.5



UNIVERSAL LANCEOLATE

EF64

UNIVERSAL PRECISION 2 MM

EF65.12

EF65.16

CALIBRATING DRILL

NORMAL	LONG	
EF66.2.7.12	EF66.2.7.16	○
EF66.3.2.12	EF66.3.2.16	○
EF66.3.7.12	EF66.3.7.16	○
EF66.4.2.12	EF66.4.2.16	○
EF66.4.7.12	EF66.4.7.16	○

SHOULDER DRILL

CODE SHOULDER	
EF66Sp.3.5	○
EF66Sp.4.0	○
EF66Sp.4.5	○
EF66Sp.5.0	○
EF66Sp.5.5	○

TAPS

CODE TAPS	
EF83.3.5-cil	○
EF83.4.0-cil	○
EF83.4.5-cil	○
EF83.5.0-cil	○
EF83.5.5-cil	○

DRILLS FOR CYLINDRICAL IMPLANT (GUIDED SURGERY)

- Ø 3.5
- Ø 4.0
- Ø 4.5
- Ø 5.0
- Ø 5.5

ANCOR PIN DRILL

EF64.AP

UNIVERSAL PRECISION 2 MM

EF65G.12	EF65G.16
----------	----------

START DRILL

CODE	
EF.START.N	○
EF.START.R	○
EF.START.W	○

CALIBRATING DRILL

NORMAL	LONG	
EF66G.2.7.12	EF66G.2.7.16	○
EF66G.3.2.12	EF66G.3.2.16	○
EF66G.3.7.12	EF66G.3.7.16	○
EF66G.4.2.12	EF66G.4.2.16	○
EF66G.4.7.12	EF66G.4.7.16	○

SHOULDER DRILL

CODE SHOULDER	
EF66GSp.3.5	○
EF66GSp.4.0	○
EF66GSp.4.5	○
EF66GSp.5.0	○
EF66GSp.5.5	○

TAPS

CODE TAPS	
EF83G.3.5-cil	○
EF83G.4.0-cil	○
EF83G.4.5-cil	○
EF83G.5.0-cil	○
EF83G.5.5-cil	○



SURGICAL ACCESSORIES

- Ø 3.5
- Ø 4.0
- Ø 4.5
- Ø 5.0
- Ø 5.5



DRILL MOUNTER TRADITIONAL SURGERY

9 mm	13 mm	17 mm
EF91T.3.5-9	EF91T.3.5-13	EF91T.3.5-17
EF91T.4.0/5.5-9	EF91T.4.0/5.5-13	EF91T.4.0/5.5-17



MANUAL MOUNTER TRADITIONAL SURGERY

9 mm	13 mm	17 mm
EF91.3.5-9	EF91.3.5-13	EF91.3.5-17
EF91.4.0/5.5-9	EF91.4.0/5.5-13	EF91.4.0/5.5-17



MOUNTER GUIDED SURGERY

CODE
EF91G.3.5
EF91G.4.0/4.5
EF91G.5.0/5.5



SPECIAL MOUNTER GUIDED SURGERY

+2 mm	+3 mm	+5 mm
EF91G.N-S2	EF91G.N-S3	EF91G.N-S5
EF91G.R-S2	EF91G.R-S3	EF91G.R-S5
EF91G.W-S2	EF91G.W-S3	EF91G.W-S5



DRILL SCREWDRIVER

20 mm	28 mm	36 mm
EF76T-20	EF76T-28	EF76T-36



MANUAL SCREWDRIVER

20 mm	28 mm	36 mm
EF76M-20	EF76M-28	EF76M-36



RATCHET TORQUE 75 Nw

EF80



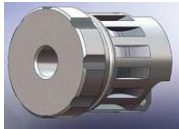
RATCHET FISSO

EF80F



RATCHET ADAPTER FOR HEXAGONAL MOUNTER

EF60AD



RATCHET ADAPTER FOR SCREWDRIVER

EF60ADT



DRILL EXTENCTION

EF78



PORTA MOUNTER

EF82



DIRECTION INDICATOR

CODE	
EF84.3.5	○
EF84.4.0	○
EF84.4.5	○
EF84.5.0	○
EF84.5.5	○



TISSUE PUNCH

CODE	
EF72.3.5	○
EF72.4.0	○
EF72.4.5	○
EF72.5.0	○
EF72.5.5	○

COMPUTER GUIDED SURGERY

REDUCER CONICAL-CYLINDRICAL



$\varnothing N$	$\varnothing R$	$\varnothing W$
EF70N.2.0	EF70R.2.0	EF70W.2.0
EF70N.2.7	EF70R.2.7	EF70W.2.7
	EF70R.3.2	EF70W.3.2
	EF70R.3.7	EF70W.3.7
		EF70W.4.2
		EF70W.4.7



HANDLE FOR RIDUCER

EF98

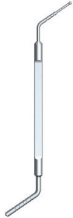


ANCOR PIN

VESTIBULAR	PALATAL
EF.Ancor-V	EF.Ancor-P

ANCOR PIN DRILL

EF64.AP



DEPTH PROBE

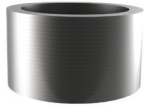
EF3



TITANIUM TWEEZER

EF2

SLEEVE



CODE
EF64SL.3.5
EF64SL.4.0-4.5
EF64SL.5.0-5.5



GUIDING CYLINDER



CODE
EF86M.3.5
EF86M.4.0-4.5
EF86M.5.0-5.5



FIXING SCREW FOR GUIDING CYLINDER



CODE
EF86MV.3.5
EF86MV.4.0-4.5
EF86MV.5.0-5.5



SPECIAL GUIDING CYLINDER



	2 mm	3 mm	5 mm
	EF86M.N-S2	EF86M.N-S3	EF86M.N-S5
	EF86M.R-S2	EF86M.R-S3	EF86M.R-S5
	EF86M.W-S2	EF86M.W-S3	EF86M.W-S5



FIXING SCREW FOR SPECIAL GUIDING CYLINDER



	2 mm	3 mm	5 mm
	EF86MV.N-S2	EF86MV.N-S3	EF86MV.N-S5
	EF86MV.R-S2	EF86MV.R-S3	EF86MV.R-S5
	EF86MV.W-S2	EF86MV.W-S3	EF86MV.W-S5



IMPRESSION COPING

SINGLE TOOTH
(closed tray)

CODE
EF61A.3.5
EF61A.4.0
EF61A.4.5
EF61A.5.0
EF61A.5.5



○ Ø 3.5

○ Ø 4.0

○ Ø 4.5

○ Ø 5.0

○ Ø 5.5

SINGLE TOOTH
(open tray)



CODE
EF61Apa.3.5
EF61Apa.4.0
EF61Apa.4.5
EF61Apa.5.0
EF61Apa.5.5



SCREW IMPRESSION COPING

Open and closed tray

SINGLE TOOTH Ø 3.5

SINGLE TOOTH Ø 4.0/5.5

CODE
EF57DS.3.5
EF57DS.4.0-5.5

SINGLE TOOTH REPLICA ABUTMENT



CODE
EF63AS.3.5-12
EF63AS.4.0-12
EF63AS.4.5-12
EF63AS.5.0-12
EF63AS.5.5-12



TEMPORARY CYLINDER

- Ø 3.5
- Ø 4.0
- Ø 4.5
- Ø 5.0
- Ø 5.5

BRIDGE TEMPORARY CYLINDER



CODE	
EF44M.3.5	○
EF44M.4.0	○
EF44M.4.5	○
EF44M.5.0	○
EF44M.5.5	○

SINGLE TOOTH TEMPORARY CYLINDER



CODE	
EF44S.3.5	○
EF44S.4.0	○
EF44S.4.5	○
EF44S.5.0	○
EF44S.5.5	○

BRIDGE TEMPORARY CYLINDER (STEEL)



CODE	
EF44M.3.5-steel	○
EF44M.4.0-steel	○
EF44M.4.5-steel	○
EF44M.5.0-steel	○
EF44M.5.5-steel	○

SINGLE TOOTH TEMPORARY CYLINDER (STEEL)



CODE	
EF44S.3.5-steel	○
EF44S.4.0-steel	○
EF44S.4.5-steel	○
EF44S.5.0-steel	○
EF44S.5.5-steel	○

CASTABLE TEMPORARY CYLINDER WAX-UP

CASTABLE TEMPORARY CYLINDER WAX-UP - BRIDGE



20 mm	
EF45Mw.3.5	○
EF45Mw.4.0	○
EF45Mw.4.5	○
EF45Mw.5.0	○
EF45Mw.5.5	○

- Ø 3.5
- Ø 4.0
- Ø 4.5
- Ø 5.0
- Ø 5.5

CASTABLE TEMPORARY CYLINDER WAX-UP - SINGLE TOOTH



CODE	
EF44w.3.5	○
EF44w.4.0	○
EF44w.4.5	○
EF44w.5.0	○
EF44w.5.5	○

CASTABLE COMPONENT



CODE	
EFW.3.5	○
EFW.4.0-5.5	○ ○ ○ ○

ACCESSORIES



DRILL SCREWDRIVER

20 mm	28 mm	36 mm
EF76T-20	EF76T-28	EF76T-36



MANUAL SCREWDRIVER

20 mm	28 mm	36 mm
EF76M-20	EF76M-28	EF76M-36

- Ø 3.5
- Ø 4.0
- Ø 4.5
- Ø 5.0
- Ø 5.5

PRODUCTS FOR PROTOTYPING

TEMPORARY CYLINDER
SCAN BODIES- BRIDGE

CODE	
EF44scan.3.5	○
EF44scan.4.0	○

TEMPORARY CYLINDER
SCAN BODIES- SINGLE TOOTH

CODE	
EF44Sscan.3.5	○
EF44Sscan.4.0	○

PROSTHETIC SCREW Ø 4.0/5.5
SINGLE TOOTH TEMPORARY CYLINDER
SINGLE TOOTH TEMPORARY CYLINDER WAX-UP

EF55

-
-
-
-

PROSTHETIC SCREW Ø 3.5
SINGLE TOOTH TEMPORARY CYLINDER
SINGLE TOOTH TEMPORARY CYLINDER WAX-UP

EF55-3.5

-

SCREW IMPRESSION COPING

Open and closed tray

SINGLE TOOTH Ø 3.5

SINGLE TOOTH Ø 4.0/5.5

CODE
EF57DS.3.5
EF57DS.4.0-5.5

