



EASYfor IMPLANTS

[PRODUCT CATALOG]



From the **FIXTURE** to the dental crow

Easyfor for all indications and implant-prosthetic solutions

COMPLETE APPROACH

Complete range of products for all treatments from a single company, ensuring high quality and compatibility between all components for any indication.

FROM MINI IMPLANTS TO THE ZYGOMATIC

We produce a wide range of implants, all with conical connection and antibacterial seal at the level of the soft tissues, diameters from 3.5mm to 6mm and lengths from 6mm to 18mm.

SERVICE "ALL INTO BAG"

Send a CD containing the patient's CT scan and the models or the fingerprint to the EASYFOR Work Solution Service and you will be sent everything you need for the implant surgery including the temporary prosthesis.



COMPONENTS FOR GUIDED SURGERY

All components for guided surgery are compatible with the Nobel Proce-sora sleeve system. We have special mounters for the placement of implants in post-extraction sites.

INNOVATIVE TREATMENTS

Thanks to the particular shape of the progressive compression coils of the D3-D4 implant, we guarantee an increase in primary stability in the upper jaw even in the presence of bone with rarefied trabeculation.

The combination with the pterygoid or zygomatic fixtures allows to solve particularly complex cases - large atrophy plus rarefied bone trabeculation - in a single session and ensuring immediate prosthetics for the patient in over 90% of cases.

PROSTHETIC COMPONENTS

FOR MAXIMUM FUNCTIONALITY AND NATURAL AESTHETICS

All our prosthetic components are manufactured in grade 5 titanium, for aesthetic, safe, predictable, easy to use results. The abutments for single teeth or for bridges have a variable "Neck" height from 0.1 to 2mm to compensate for the different height of the gingiva. Abutments for cemented prostheses that ensure natural aesthetic results and maximum functionality.



A SUCCESS STORY

EASYfor Medical Device is an Italian company specializing in dental implantology able to meet the needs of professionals, dental laboratories and patients. Our goal is to provide the dental team with a complete service, from product to consultancy, from teaching to clinical tutoring.

Thanks to thirty years of know-how in the implantology field and collaborations with the best companies in the sector, EASYfor represents a unique reality, in which professional and human value are the pillars of an Italian production exported all over the world. Our strength is sharing: a wealth of experience made available to colleagues, an extremely versatile product that adapts to their every need, a balanced price without any exaggeration.

A CERTIFIED QUALITY

EASYfor Medical Device production includes implants, surgical drills, components and clinical and laboratory prosthetic accessories. Furthermore, EASYfor has the possibility of producing, based on the customer's design, "unique pieces" in order to satisfy every type of need of the clinician and the dental laboratory.

EASYfor implant production is conceived and designed in-house and is produced in Italy under strict control of the company that combines the highest quality and safety standards. EASYfor Medical Device is ISO 13485 and ISO 0051 certified.

To offer a complete service EASYfor operates in three macro areas:

- EASYfor Implants
- EASYfor Work Solutions
- EASYfor Educational

CATALOG INDEX

●	INTRODUCTION	6
	• Dental implants	6
	• Packaging and sterilization	7
	• Implant characteristics	8
	• One connection	9
	• Chemical composition of materials	10
	• Certificates EASYfor	11
	• Quality without compromise	12
●	DENTAL IMPLANTS biphasic line	13
	• Implant characteristics	14
	• Conical biphasic	15
	• Cylindrical biphasic	16
	• D3-D4 biphasic	17
	• Implant drills	19
	TRADITIONAL SURGERY AND GUIDED SURGERY	
	• Surgical accessories	25
	• Impression coping	31
	• Replica abutment	33
	• Temporary cylinder	34
	• Temporary abutment	35
	• Temporary cylinder and castable abutment for wax-up	36
	• Accessories	38
	• Prototyping products	39
	• Screws for kit	41
●	DENTAL IMPLANTS monophasic line	44
	• Conical monophasic	45
	• Cylindrical monophasic	46
	• D3-D4 monophasic	47
	• Implant drills	48
	TRADITIONAL SURGERY AND GUIDED SURGERY	





• Surgical accessories	54
• Computer guided surgery	56
• Impression coping	59
• Temporary cylinder	60
• Accessories and products for prototyping	62
OTHER DENTAL IMPLANTS	63
• Characteristics mini implant system	64
• Characteristics zygomatic implant system	66
• Characteristics short implant system	69
KIT ABUTMENT	75
• KIT abutment 15° - Single tooth and bridge	76
• KIT abutment 30° - Single tooth and bridge	77
• KIT abutment 40° - Single tooth and bridge	78
• KIT abutment 45° - Single tooth and bridge	79
APPENDIX	81
• Surgical KITS	82
• Cleaning and sterilization tips	84
• Packaging and labeling	87
• Torque Selection Guide	88
• The EASYfor method	89
SERVICES	91
• All into bag service	92
• Teaching and ECM credits	93
• Help desk and technical support	94
• White teeth and a beautiful smile immediately	95
• Shop online	96



DENTAL IMPLANTS

Solutions and technology at the service of clinicians and patients

The wide range of products, with 9 lines of dental implants - 9 diameters and over 15 lengths - allows the clinician to adapt the product to the availability and bone quality of the patient, even in cases of severe atrophy of the jaws.

The EASYfor system has a conical connection with internal hexagonal anti-rotation, the same for all implant lines. This feature makes the product:

- **safe** (the conical connection with cold welding that is made after tightening between fixture and abutment guarantees an antibacterial seal and great stability of the abutment implant);
- **predictable** in the aesthetic and functional result;
- **ergonomic** (each component is in fact studied in detail to facilitate the work of the implant-prosthetic team).



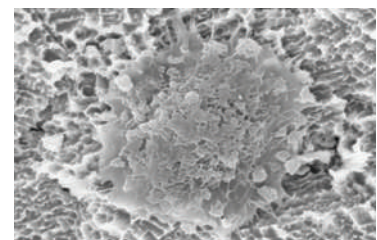
DECONTAMINATION

EASYfor has entrusted Nobil Bio Ricerche with the decontamination and surface treatment processes of the implant lines.

The implants are sandblasted and treated with double acid etching, they are supplied sterile and with EASYfor color code. All treatments include final decontamination with plasma treatment and packaging takes place in an ISO7 class clean room.

The characteristics of the surfaces obtained are continuously checked thanks to the analytical technologies available to the company and which allow to document the absolute excellence and superiority of the surface properties imparted.

Nobil Bio Ricerche performs analysis of materials and medical devices with the main surface characterization techniques, using X-ray photoelectric spectroscopy (XPS), SEM-EDX, AFM, roughness measurements with StereoSEM. The analytical offer is completed by UV-VIS and Infra-Red spectroscopies, and HPLC measurements for drug-release systems.



PACKAGING

The packaging of each individual system is carried out in a clean room using polycarbonate vials with cap reproducing the color code

The second phase involves the insertion of the implant in a double pack with hermetic closure by means of a cap with color code and inserted in a blister with a label indicating the type of implant, the diameter and the length, in order to make it as simple as possible, the identification of the product inside the package.



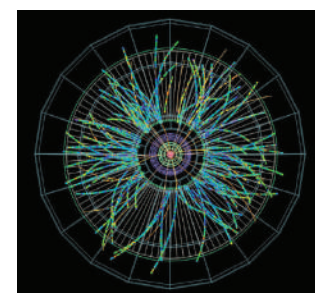
STERILIZATION

All EASYFOR implants are supplied sterile and EASYFOR has entrusted the sterilization process of implants and accessories to the company Gammatom. Gamma radiations are high energy electromagnetic waves characterized by a deep penetration.

The radioisotope used is cobalt 60, the only one used worldwide in photon irradiation processes. The high penetration allows to intervene on the final closed packaging, excluding any manipulation of the products contained before, during, and after treatment. The process takes place in environmental conditions of temperature, pressure and humidity, it does not generate heat and does not subject the packaging to differentiated pressures that could compromise its tightness, it leaves no residues of any kind.

Main effects of radiation on single and multicellular organisms:

- breakage of the DNA thus impeding cell replication
- alteration of the structure of the messenger RNA that is no longer recognized by the receptors



IMPLANT characteristics

Wide innovative range for every need

- Internal hexagonal connection with anti-rotation
- 8° morse taper

MICRO THREAD

- promotes and maintains the formation of bone tissue in the cortical area
- h = 3 mm

SANDBLASTED SURFACE AND ACIDIFIED

- to increase the adhesion between bone cells and the implant

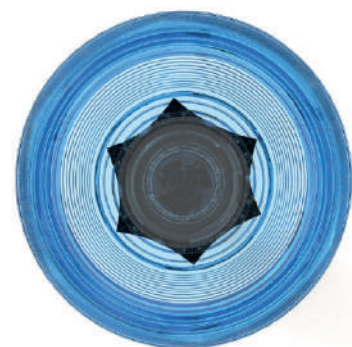
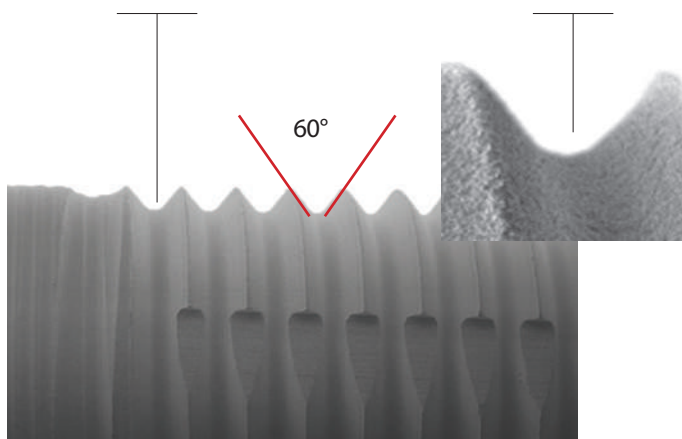
PLATFORM SWITCHING

- the connection of the abutment smaller than the diameter of the implant allows for optimal adhesion of the gingival tissue
- to obtain an optimal aesthetic result
- to prevent and/or significantly reduce the loss of marginal bone



V-coil to reduce stress on bone tissue

Rounded shape of the base of the coil



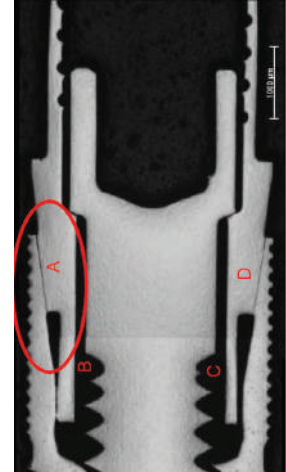
CONNECTION

- conical
- anti-rotation hexagon
- for all types of implant

One CONNECTION

The conical system is a self-centering system and this allows a considerable facilitation of all clinical procedures, both in the surgical phase and in the prosthetic phase.

The conical system moves the axial load into the internal part of the implant and directs the stress vectors deeper into the medullary bone, favoring its dissipation in depth. The danger of bone resorption due to overload is thus significantly reduced, giving hard and soft tissues a healthy appearance.



The Easyfor conical connection has a single size for implants with a diameter from 4.0 to 5.5 and for all its lines.

In this way, the whole range of prosthetic abutments can be used interchangeably on all the different diameters and implant shapes.

We will therefore have:

- one connection screw;
- a single impression transfer system;
- only one analog of the implant for casting laboratory models.

With a considerable reduction in the number of components to be used during the delicate operating phases both in the dental office and in the dental laboratory.

PROTOCOL

WHITE TEETH AND BEAUTIFUL SMILE IMMEDIATELY

- Radiographic tests to find the best place to graft the titanium roots
- evaluation of the patient's condition and facial or facial diagnosis
- intervention planning and visualization of the final result

Surgical devices

prosthetically guided:

- Radiological mask + CT
- Surgical mask
- drills to prepare the implant site
- mount for guided surgery fixture
- torque wrench
- Easyfor implants abutment

CHEMICAL composition of MATERIALS

DENTAL IMPLANTS

Grade 4 titanium (98.938% pure) cold worked

ELEMENT		COMPOSITION (% WEIGHT)
NITROGEN	N	> 0,03% - 0,05%
CARBON	C	0,10%
HYDROGEN	H	> 0,015% - < 0,015%
IRON	Fe	> 0,20% - < 0,50%
OXYGEN	O	> 0,18% - < 0,50%
TITANIUM	Ti	98,938%

COMPONENTS

Grade 5 titanium (6A1-4V ELI - 89.48% PURE), meeting international standards of reference

ELEMENT		COMPOSITION (% WEIGHT)
NITROGEN	N	0,05%
CARBON	C	0,08%
HYDROGEN	H	0,012%
IRON	Fe	0,25%
OXYGEN	O	0,13%
ALUMINIUM	Al	> 5,5%
VANADIUM	V	> 3,5% - < 4,5%
TITANIUM	Ti	89,48%

Certificates EASYFOR

CERTIFICATO CE
Certificato n. 1914/MDD

Dichiarazione di approvazione del sistema qualità
(Sistema completo di garanzia qualità)

Visto l'esito delle verifiche condotte in conformità all'Allegato II, con l'esclusione del punto 4, della direttiva 93/42/CEE e s.m.i., si dichiara che la ditta:

EASYFOR MEDICAL DEVICE SRL
10070 Balangero (TO) - VIA SAN FIRMINO 31 (ITA) - Italy

mantiene negli stabilimenti di:

11100 AOSTA (AO) - CORSO LANCIERI DI AOSTA 13L (ITA) - Italy

un sistema qualità che assicura la conformità dei seguenti prodotti:

Impianti dentali
Mod. Rif. Documento "FT 01 Impianti_CL IB del 09/09/2016", valido solo se previsto dal timbro IMQ.

Abutment
Mod. Rif. Documento "FT 02 Protesca_CL IB del 09/09/2016", valido solo se previsto dal timbro IMQ.

Frese dentali ed accessori
Mod. Rif. Documento "FT 03 Strumentario_CL IA del 09/09/2016", valido solo se previsto dal timbro IMQ.

Marca Easyfor.

ai requisiti essenziali della direttiva suddetta ad essi applicabili (in tutte le fasi dalla progettazione al controllo finale) ed è sottoposta alla sorveglianza prevista dal punto 5 dell'Allegato II.

Riferimento pratico IMQ:
DM16-0004066-01.

Questa Dichiarazione di approvazione è rilasciata dall'IMQ S.p.A. quale organismo notificato per la direttiva 93/42/CEE e s.m.i.
Il numero identificativo dell'IMQ S.p.A. quale organismo notificato è: 0051.

Emesso il: 2016-10-16

Data scadenza: 2021-10-15

IMQ

IMQ S.p.A. - 20138 Milano
Via Quinto Iano 43
Tel. +39 0250731
www.imq.it

Questa Dichiarazione di approvazione è soggetta alle condizioni previste dall'IMQ nel "Regolamento per la certificazione CE" in formato pdf, in base alla direttiva 93/42/CEE.

CSQ

CERTIFICATO N. 9190.ESY1
CERTIFICATE N. 9190.ESY1

SI CERTIFICA CHE IL SISTEMA QUALITÀ DI
WE HEREBY CERTIFY THAT THE QUALITY SYSTEM OPERATED BY

EASYFOR MEDICAL DEVICE SRL
VIA SAN FIRMINO 31 - 10070 BALANGERO (TO)

UNITÀ OPERATIVE
OPERATIVE UNITS
VIA SAN FIRMINO 31 - 10070 BALANGERO (TO)
CORSO LANCIERI DI AOSTA 13L - 11100 AOSTA (AO)

E' CONFORME ALLA NORMA
IS IN COMPLIANCE WITH THE STANDARD

ISO 9001:2008

PER LE SEGUENTI ATTIVITÀ
FOR THE FOLLOWING ACTIVITIES:

Progettazione e gestione della produzione di strumenti dentali e impianti dentali
Design and production management of dental instruments and dental implants

Ulteriori informazioni riguardanti l'applicabilità dei requisiti ISO 9001:2008 possono essere ottenute consultando l'organizzazione.
Further clarifications regarding the applicability of ISO 9001:2008 requirements may be obtained by consulting the organization.

IL PRESENTE CERTIFICATO È SOGGETTO AL RISPECTO DEL
REGOLAMENTO PER LA CERTIFICAZIONE DEI SISTEMI DI GESTIONE
THE USE AND THE VALIDITY OF THE CERTIFICATE SHALL SATISFY THE
REQUIREMENTS OF THE RULES FOR CERTIFICATION OF MANAGEMENT SYSTEMS

PRIMA CERTIFICAZIONE FIRST CERTIFICATION	EMMISSIONE CORRENTE CURRENT ISSUE	SCADENZA EXPIRY
2017-01-03	2017-01-03	2020-01-03

L'Organizzazione dovrà ottenere la certificazione secondo la norma ISO 9001:2008 entro il 31/10/2018.
In caso contrario, il presente certificato cesserà la propria validità in tale data.
The Organization shall obtain the certification according to ISO 9001:2008 within 31/10/2018, otherwise the validity of this certificate will expire.

IMQ S.p.A. - VIA QUINTILIANO, 43 - 20138 MILANO ITALY
Management Systems Division - Fiscal Design

ACCREDIA IAF: 17, 19

CISQ

IQNet
THE INTERNATIONAL CERTIFICATION NETWORK

CERTIFICATE

IQNet and its partner
CISQ/IMQ-CSQ
hereby certify that the organization

EASYFOR MEDICAL DEVICE SRL
VIA SAN FIRMINO 31 - 10070 BALANGERO (TO)
CORSO LANCIERI DI AOSTA 13L - 11100 AOSTA (AO)

for the following field of activities

Design and production management of Dental instruments and dental implants
Further clarifications regarding the applicability of ISO 9001:2008 requirements may be obtained by consulting the organization

has implemented and maintains a
Quality Management System
which fulfills the requirements of the following standard
ISO 9001:2008

Issued on: 2017 - 01 - 03 Expiry date: 2020 - 01 - 03

Registration Number: **IT - 109504**

The status of validity of the certificate can be verified at <http://www.cisq.com> or by email at info@iqnet.com

Michael Drechsel
President of IQNET

Ing. Claudio Proietti
President of CISQ

IQNet Partners**
AENOR Spain AENOR Certification France Viret Belgium APCER Portugal CCC Cyprus
CIBO Italy CIBO China CIBO China CIBO Czech Republic CIBO Czech Republic CIBO Germany
ECM Brazil FONDATION Viret France FONDATION Viret France FONDATION Viret France FONDATION Viret France
IRAN Argentina IQA Japan KQC Korea METRIQ Oman METRIQ Hungary METRIQ Serbia METRIQ Poland
Quality Assurance Austria ER-Russia SIBU Mexico SIBU Slovakia SIBU GAS International Malaysia
SQS Switzerland SRAC Romania TEST SI Petersburg Russia TSE Turkey YIQS Serbia
IQNet is represented in the USA by: AENOR Certification, CIBO, IQS, Tackling Global and NSAI Inc.

* This association is directly linked to the IQNet Partner's original certificate and shall not be used on a stand-alone document
** The list of IQNet partners is valid at the time of issue of this certificate. Updated information is available under www.iqnet-certification.com

CSQ MED

CERTIFICATO N. 9124.ESY2
CERTIFICATE N. 9124.ESY2

SI CERTIFICA CHE IL SISTEMA QUALITÀ DI
WE HEREBY CERTIFY THAT THE QUALITY SYSTEM OPERATED BY

EASYFOR MEDICAL DEVICE SRL
VIA SAN FIRMINO 31 - 10070 BALANGERO (TO)

UNITÀ OPERATIVE
OPERATIVE UNITS
VIA SAN FIRMINO 31 - 10070 BALANGERO (TO)
CORSO LANCIERI DI AOSTA 13L - 11100 AOSTA (AO)

E' CONFORME ALLA NORMA
IS IN COMPLIANCE WITH THE STANDARD

EN ISO 13485:2012

PER LE SEGUENTI ATTIVITÀ
FOR THE FOLLOWING ACTIVITIES:

Progettazione e gestione della produzione di strumenti dentali e impianti dentali
Design and production management of dental instruments and dental implants

Ulteriori informazioni riguardanti l'applicabilità dei requisiti EN ISO 13485:2012 possono essere ottenute consultando l'organizzazione.
Further clarifications regarding the applicability of EN ISO 13485:2012 requirements may be obtained by consulting the organization.

IL PRESENTE CERTIFICATO È SOGGETTO AL RISPECTO DEL
REGOLAMENTO PER LA CERTIFICAZIONE DEI SISTEMI DI GESTIONE
THE USE AND THE VALIDITY OF THE CERTIFICATE SHALL SATISFY THE
REQUIREMENTS OF THE RULES FOR CERTIFICATION OF MANAGEMENT SYSTEMS

PRIMA CERTIFICAZIONE FIRST CERTIFICATION	EMMISSIONE CORRENTE CURRENT ISSUE	SCADENZA EXPIRY
2017-01-03	2017-01-03	2020-01-03

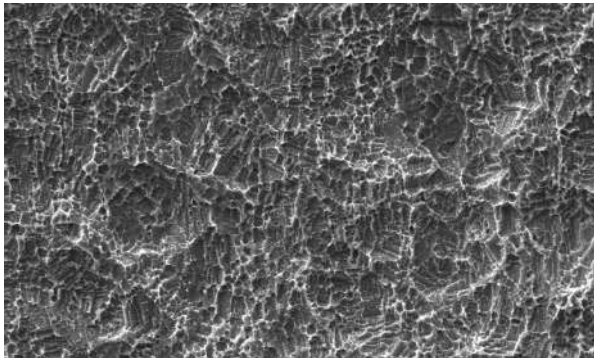
L'Organizzazione dovrà ottenere la certificazione secondo la norma EN ISO 13485:2012 entro il 31/10/2018.
In caso contrario, il presente certificato cesserà la propria validità in tale data.
The Organization shall obtain the certification according to EN ISO 13485:2012 within 31/10/2018, otherwise the validity of this certificate will expire.

IMQ S.p.A. - VIA QUINTILIANO, 43 - 20138 MILANO ITALY
Management Systems Division - Fiscal Design

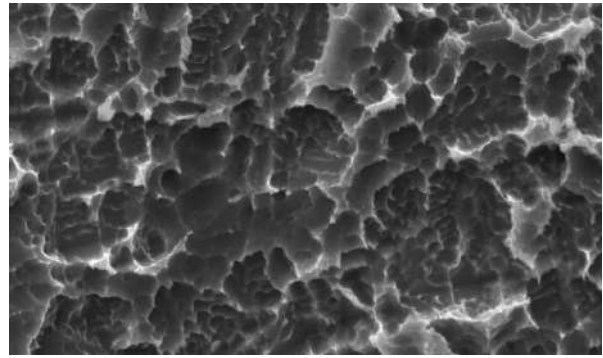
ACCREDIA IAF: 17, 19

CISQ

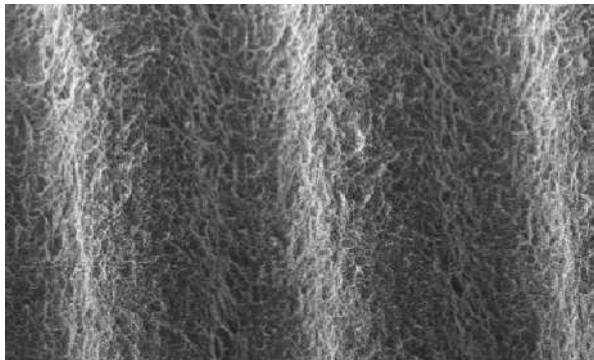
QUALITY without compromise



SEM image of a dental implant

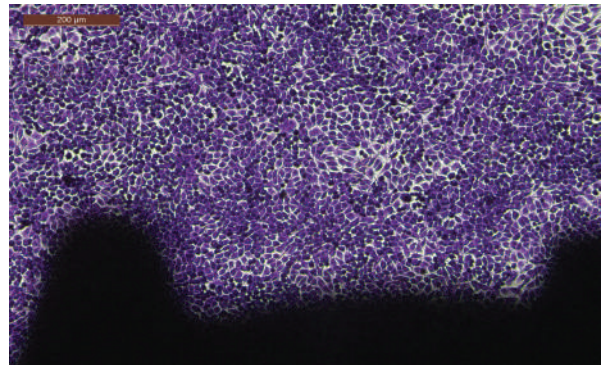
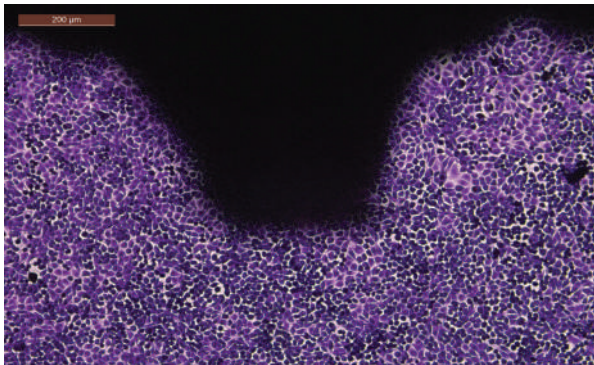


SEM image of a sandblasted and double acidified surface



SURFACE TREATMENT OF EASYFOR IMPLANTS

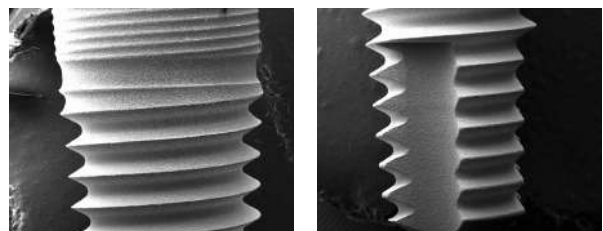
- increases safety in the initial healing phase;
- creates a greater functional and structural connection between living bone and implant;
- promotes the formation of the fibrin network;
- facilitates the start of the healing process.



BIOLOGICAL EVALUATION OF MEDICAL DEVICES "METHOD FOR DIRECT CONTACT "EN ISO 10993-5: 2009

The cells used for the verification of cytotoxicity are the connective tissue of the muscle fibroblasts of the L-929 mouse (BS CL 56).

The sample treated implants analyzed showed, in terms of quality, a perfect cytocompatibility, that is, an absolute absence of cytotoxic effects towards L-929 fibroblasts.



SEM image of a dental implant



DENTAL IMPLANTS

Biphasic line

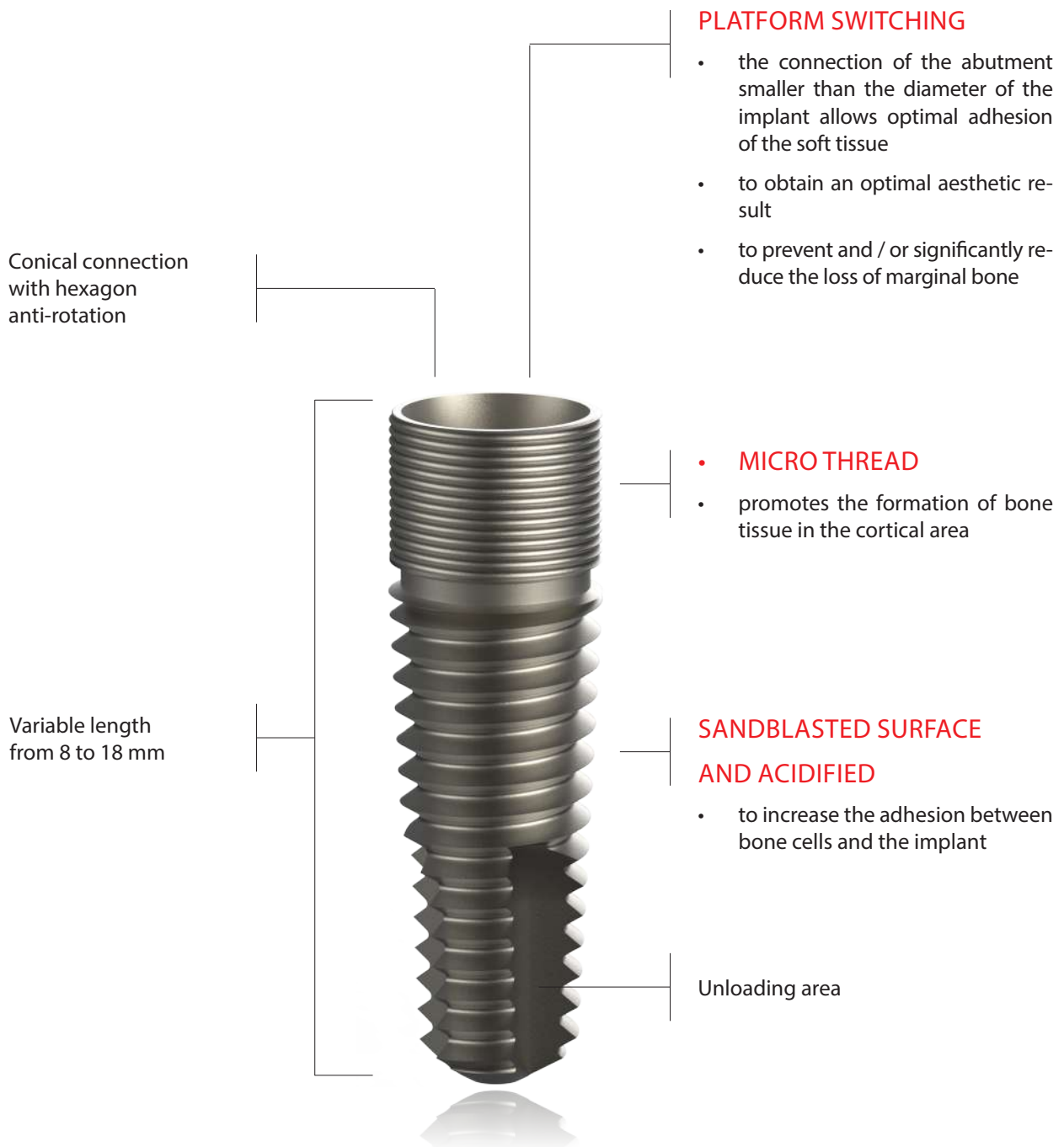
Conical internal connection

CONICAL, CYLINDRICAL, D3_D4 SOFT BONE, SHORT, ZYGOMATIC

IMPLANT Characteristics

Biphasic line

Wide innovative range for every need



CONICAL BIPHASIC

- Ø 3.5
- Ø 4.0
- Ø 4.5
- Ø 5.0
- Ø 5.5

NORMAL

	8 mm	9 mm	10 mm	11 mm	12 mm
○	EF11.3.5-8	EF11.3.5-9	EF11.3.5-10	EF11.3.5-11	EF11.3.5-12
○	EF11.4.0-8	EF11.4.0-9	EF11.4.0-10	EF11.4.0-11	EF11.4.0-12
○	EF11.4.5-8	EF11.4.5-9	EF11.4.5-10	EF11.4.5-11	EF11.4.5-12
○	EF11.5.0-8	EF11.5.0-9	EF11.5.0-10	EF11.5.0-11	EF11.5.0-12
○	EF11.5.5-8	EF11.5.5-9	EF11.5.5-10	EF11.5.5-11	EF11.5.5-12

LONG

	13 mm	14 mm	15 mm	16 mm	18 mm
○	EF11.3.5-13	EF11.3.5-14	EF11.3.5-15	EF11.3.5-16	EF11.3.5-18
○	EF11.4.0-13	EF11.4.0-14	EF11.4.0-15	EF11.4.0-16	EF11.4.0-18
○	EF11.4.5-13	EF11.4.5-14	EF11.4.5-15	EF11.4.5-16	EF11.4.5-18
○	EF11.5.0-13	EF11.5.0-14	EF11.5.0-15	EF11.5.0-16	EF11.5.0-18
○	EF11.5.5-13	EF11.5.5-14	EF11.5.5-15	EF11.5.5-16	EF11.5.5-18



CYLINDRICAL BIPHASIC

- Ø 3.5
- Ø 4.0
- Ø 4.5
- Ø 5.0
- Ø 5.5

NORMAL

	8 mm	9 mm	10 mm	11 mm	12 mm
○	EF13.3.5-8	EF13.3.5-9	EF13.3.5-10	EF13.3.5-11	EF13.3.5-12
○	EF13.4.0-8	EF13.4.0-9	EF13.4.0-10	EF13.4.0-11	EF13.4.0-12
○	EF13.4.5-8	EF13.4.5-9	EF13.4.5-10	EF13.4.5-11	EF13.4.5-12
○	EF13.5.0-8	EF13.5.0-9	EF13.5.0-10	EF13.5.0-11	EF13.5.0-12
○	EF13.5.5-8	EF13.5.5-9	EF13.5.5-10	EF13.5.5-11	EF13.5.5-12

LONG

	13 mm	14 mm	15 mm	16 mm	18 mm
○	EF13.3.5-13	EF13.3.5-14	EF13.3.5-15	EF13.3.5-16	EF13.3.5-18
○	EF13.4.0-13	EF13.4.0-14	EF13.4.0-15	EF13.4.0-16	EF13.4.0-18
○	EF13.4.5-13	EF13.4.5-14	EF13.4.5-15	EF13.4.5-16	EF13.4.5-18
○	EF13.5.0-13	EF13.5.0-14	EF13.5.0-15	EF13.5.0-16	EF13.5.0-18
○	EF13.5.5-13	EF13.5.5-14	EF13.5.5-15	EF13.5.5-16	EF13.5.5-18



D3-D4 BIPHASIC

- Ø 3.5
- Ø 4.0
- Ø 4.5
- Ø 5.0
- Ø 5.5

NORMAL

	8 mm	9 mm	10 mm	11 mm	12 mm
○	EF15.3.5-8	EF15.3.5-9	EF15.3.5-10	EF15.3.5-11	EF15.3.5-12
○	EF15.4.0-8	EF15.4.0-9	EF15.4.0-10	EF15.4.0-11	EF15.4.0-12
○	EF15.4.5-8	EF15.4.5-9	EF15.4.5-10	EF15.4.5-11	EF15.4.5-12
○	EF15.5.0-8	EF15.5.0-9	EF15.5.0-10	EF15.5.0-11	EF15.5.0-12
○	EF15.5.5-8	EF15.5.5-9	EF15.5.5-10	EF15.5.5-11	EF15.5.5-12

LONG

	13 mm	14 mm	15 mm	16 mm	18 mm
○	EF15.3.5-13	EF15.3.5-14	EF15.3.5-15	EF15.3.5-16	EF15.3.5-18
○	EF15.4.0-13	EF15.4.0-14	EF15.4.0-15	EF15.4.0-16	EF15.4.0-18
○	EF15.4.5-13	EF15.4.5-14	EF15.4.5-15	EF15.4.5-16	EF15.4.5-18
○	EF15.5.0-13	EF15.5.0-14	EF15.5.0-15	EF15.5.0-16	EF15.5.0-18
○	EF15.5.5-13	EF15.5.5-14	EF15.5.5-15	EF15.5.5-16	EF15.5.5-18



PROTECTION CAP
ABUTMENT BRIDGE



20°
EF35.3.5-20
EF35.4.0-20
EF35.4.5-20
EF35.5.0-20
EF35.5.5-20

-
-
-
-
-

- Ø 3.5
- Ø 4.0
- Ø 4.5
- Ø 5.0
- Ø 5.5

PROTECTION CAP
ABUTMENT SINGLE TOOTH



CODE
EF36.3.5
EF36.4.0
EF36.4.5
EF36.5.0
EF36.5.5

-
-
-
-
-



COVER SCREW

EF30.3.5	EF30.4.0/5.5
○	○ ○ ○ ○ ○

ANATOMICAL HEALING SCREW



NECK 2 mm	NECK 4 mm	NECK 6 mm
EF33A.3.5-2.0	EF33A.3.5-4.0	EF33A.3.5-6.0
EF33A.4.0-2.0	EF33A.4.0-4.0	EF33A.4.0-6.0
EF33A.4.5-2.0	EF33A.4.5-4.0	EF33A.4.5-6.0
EF33A.5.0-2.0	EF33A.5.0-4.0	EF33A.5.0-6.0
EF33A.5.5-2.0	EF33A.5.5-4.0	EF33A.5.5-6.0

-
-
-
-
-

CYLINDRICAL HEALING SCREW



COLLO 2 mm	COLLO 4 mm	COLLO 6 mm
EF33C.3.5-2.0	EF33C.3.5-4.0	EF33C.3.5-6.0
EF33C.4.0-2.0	EF33C.4.0-4.0	EF33C.4.0-6.0
EF33C.4.5-2.0	EF33C.4.5-4.0	EF33C.4.5-6.0
EF33C.5.0-2.0	EF33C.5.0-4.0	EF33C.5.0-6.0
EF33C.5.5-2.0	EF33C.5.5-4.0	EF33C.5.5-6.0

-
-
-
-
-

DRILLS FOR CONICAL IMPLANT (TRADITIONAL SURGERY)

- Ø 3.5
- Ø 4.0
- Ø 4.5
- Ø 5.0
- Ø 5.5



UNIVERSAL LANCEOLATE

EF64

UNIVERSAL PRECISION 2 MM

EF65.12 EF65.16

CALIBRATING DRILL

NORMAL	LONG	
EF65.1.5.12	EF65.1.5.16	○
EF65.2.0.12	EF65.2.0.16	○
EF65.2.5.12	EF65.2.5.16	○
EF65.3.0.12	EF65.3.0.16	○
EF65.3.5.12	EF65.3.5.16	○

SHOULDER DRILL

CODE SHOULDER	
EF65Sp.3.5	○
EF65Sp.4.0	○
EF65Sp.4.5	○
EF65Sp.5.0	○
EF65Sp.5.5	○

TAPS

CODE TAPS	
EF83.3.5-con	○
EF83.4.0-con	○
EF83.4.5-con	○
EF83.5.0-con	○
EF83.5.5-con	○

DRILLS FOR CYLINDRICAL IMPLANT (TRADITIONAL SURGERY)

- Ø 3.5
- Ø 4.0
- Ø 4.5
- Ø 5.0
- Ø 5.5



UNIVERSAL LANCEOLATE

EF64

UNIVERSAL PRECISION 2 MM

EF65.12 EF65.16

CALIBRATING DRILL

NORMAL	LONG	
EF66.2.7.12	EF66.2.7.16	○
EF66.3.2.12	EF66.3.2.16	○
EF66.3.7.12	EF66.3.7.16	○
EF66.4.2.12	EF66.4.2.16	○
EF66.4.7.12	EF66.4.7.16	○

SHOULDER DRILL

CODE SHOULDER	
EF66Sp.3.5	○
EF66Sp.4.0	○
EF66Sp.4.5	○
EF66Sp.5.0	○
EF66Sp.5.5	○

TAPS

CODE TAPS	
EF83.3.5-cil	○
EF83.4.0-cil	○
EF83.4.5-cil	○
EF83.5.0-cil	○
EF83.5.5-cil	○



DRILLS FOR D3 - D4 IMPLANT (TRADITIONAL SURGERY)

- Ø 3.5
- Ø 4.0
- Ø 4.5
- Ø 5.0
- Ø 5.5



UNIVERSAL LANCEOLATE

EF64

UNIVERSAL PRECISION 2 MM

EF65.12 EF65.16

STEP DRILL

NORMAL	LONG	
EF67.2.0/2.7.12	EF67.2.0-2.7.16	○
EF67.2.5/3.0.12	EF67.2.5-3.0.16	○
EF67.3.0/3.5.12	EF67.3.0-3.5.16	○
EF67.3.5/4.0.12	EF67.3.5-4.0.16	○
EF67.4.0/4.5.12	EF67.4.0-4.5.16	○

SHOULDER DRILL

CODE SHOULDER	
EF67.3.5	○
EF67.4.0	○
EF67.4.5	○
EF67.5.0	○
EF67.5.5	○

TAPS

CODE TAPS	
EF83.3.5-D3	○
EF83.4.0-D3	○
EF83.4.5-D3	○
EF83.5.0-D3	○
EF83.5.5-D3	○

DRILLS FOR CONICAL IMPLANT (GUIDED SURGERY)

- Ø 3.5
- Ø 4.0
- Ø 4.5
- Ø 5.0
- Ø 5.5

ANCOR PIN DRILL

EF64.AP

UNIVERSAL PRECISION 2 MM

EF65G.12	EF65G.16
----------	----------

START DRILL

CODE	
EF.START.N	○
EF.START.R	○
EF.START.W	○

CALIBRATING DRILL

NORMAL	LONG	
EF65G.1.5.12	EF65G.1.5.16	○
EF65G.2.0.12	EF65G.2.0.16	○
EF65G.2.5.12	EF65G.2.5.16	○
EF65G.3.0.12	EF65G.3.0.16	○
EF65G.3.5.12	EF65G.3.5.16	○

SHOULDER DRILL

CODE SHOULDER	
EF65GSp.3.5	○
EF65GSp.4.0	○
EF65GSp.4.5	○
EF65GSp.5.0	○
EF65GSp.5.5	○

TAPS

CODE TAPS	
EF83G.3.5-con	○
EF83G.4.0-con	○
EF83G.4.5-con	○
EF83G.5.0-con	○
EF83G.5.5-con	○

DRILLS FOR CYLINDRICAL IMPLANT (GUIDED SURGERY)

- Ø 3.5
- Ø 4.0
- Ø 4.5
- Ø 5.0
- Ø 5.5

ANCOR PIN DRILL

EF64.AP

UNIVERSAL PRECISION 2 MM

EF65G.12	EF65G.16
----------	----------

START DRILL

CODICE	
EF.START.N	○
EF.START.R	○
EF.START.W	○

CALIBRATING DRILL

NORMAL	LONG	
EF66G.2.7.12	EF66G.2.7.16	○
EF66G.3.2.12	EF66G.3.2.16	○
EF66G.3.7.12	EF66G.3.7.16	○
EF66G.4.2.12	EF66G.4.2.16	○
EF66G.4.7.12	EF66G.4.7.16	○

SHOULDER DRILL

CODE SHOULDER	
EF66GSp.3.5	○
EF66GSp.4.0	○
EF66GSp.4.5	○
EF66GSp.5.0	○
EF66GSp.5.5	○

TAPS

CODE TAPS	
EF83G.3.5-cil	○
EF83G.4.0-cil	○
EF83G.4.5-cil	○
EF83G.5.0-cil	○
EF83G.5.5-cil	○

DRILLS FOR D3 - D4 IMPLANT (GUIDED SURGERY)

- Ø 3.5
- Ø 4.0
- Ø 4.5
- Ø 5.0
- Ø 5.5

ANCOR PIN DRILL

EF64.AP

UNIVERSAL PRECISION 2 MM

EF65G.12	EF65G.16
----------	----------

START DRILL

CODE	
EF.START.N	○
EF.START.R	○
EF.START.W	○

STEP DRILL

NORMAL	LONG	
EF67G.2.0/2.7.12	EF67G.2.0/2.7.16	○
EF67G.2.5/3.0.12	EF67G.2.5/3.0.16	○
EF67G.3.0/3.5.12	EF67G.3.0/3.5.16	○
EF67G.3.5/4.0.12	EF67G.3.5/4.0.16	○
EF67G.4.0/4.5.12	EF67G.4.0/4.5.16	○

SHOULDER DRILL

CODE SHOULDER	
EF67G.3.5	○
EF67G.4.0	○
EF67G.4.5	○
EF67G.5.0	○
EF67G.5.5	○

TAPS

CODE TAPS	
EF83G.3.5-D3	○
EF83G.4.0-D3	○
EF83G.4.5-D3	○
EF83G.5.0-D3	○
EF83G.5.5-D3	○

SURGICAL ACCESSORIES

- Ø 3.5
- Ø 4.0
- Ø 4.5
- Ø 5.0
- Ø 5.5



DRILL MOUNTER FOR TRADITIONAL SURGERY

9 mm	13 mm	17 mm
EF81T.3.5-9	EF81T.3.5-13	EF81T.3.5-17
EF81T.4.0/5.5-9	EF81T.4.0/5.5-13	EF81T.4.0/5.5-17

-
-
-
-



MANUAL MOUNTER FOR TRADITIONAL SURGERY

9 mm	13 mm	17 mm
EF81.3.5-9	EF81.3.5-13	EF81.3.5-17
EF81.4.0/5.5-9	EF81.4.0/5.5-13	EF81.4.0/5.5-17

-
-
-
-



MOUNTER FOR GUIDED SURGERY

CODE
EF81G.3.5
EF81G.4.0/4.5
EF81G.5.0/5.5

-
-
-
-



MOUNTER SPECIAL FOR GUIDED SURGERY

+2 mm	+3 mm	+5 mm
EF81G.N-S2	EF81G.N-S3	EF81G.N-S5
EF81G.R-S2	EF81G.R-S3	EF81G.R-S5
EF81G.W-S2	EF81G.W-S3	EF81G.W-S5

-
-
-
-



DRILL MOUNT ABUTMENT

20 mm	28 mm	36 mm
EF75T.3.5-20	EF75T.3.5-28	EF75T.3.5-36
EF75T.4.0/5.5-20	EF75T.4.0/5.5-28	EF75T.4.0-5.5-36

-
-
-
-



MANUAL MOUNTABUTMENT

20 mm	28 mm	36 mm
EF75M.3.5-20	EF75M.3.5-28	EF75M.3.5-36
EF75M.4.0/5.5-20	EF75M.4.0/5.5-28	EF75M.4.0/5.5-36



DRILL SCREWDRIVER

20 mm	28 mm	36 mm
EF76T-20	EF76T-28	EF76T-36



MANUAL SCREWDRIVER

20 mm	28 mm	36 mm
EF76M-20	EF76M-28	EF76M-36

BULL ABUTMENT SCREWDRIVER

EF79BULL



RATCHET TORQUE 75 Nw

EF80



FIXED RATCHET

EF80F



RATCHET ADAPTER FOR HEXAGONAL MOUNTER

EF60AD



RATCHET ADAPTER FOR SCREWDRIVER

EF60ADT

DIRECTION INDICATOR



CODE	
EF84.3.5	○
EF84.4.0	○
EF84.4.5	○
EF84.5.0	○
EF84.5.5	○



DRILL EXTENSION

EF78

TISSUE PUNCH



CODE	
EF72.3.5	○
EF72.4.0	○
EF72.4.5	○
EF72.5.0	○
EF72.5.5	○



PORTA MOUNTER

EF82

REDUCER CONICAL - CYLINDRICAL



Ø N	Ø R	Ø W
EF70N.2.0	EF70R.2.0	EF70W.2.0
EF70N.2.7	EF70R.2.7	EF70W.2.7
	EF70R.3.2	EF70W.3.2
	EF70R.3.7	EF70W.3.7
		EF70W.4.2
		EF70W.4.7

REDUCER D3-D4



$\varnothing N$	$\varnothing R$	$\varnothing W$
EF71N.2.0	EF71R.2.0	EF71W.2.0
EF71N.2.5	EF71R.2.5	EF71W.2.5
	EF71R.3.0	EF71W.3.0
	EF71R.3.5	EF71W.3.5
		EF71W.4.0
		EF71W.4.5



HANDLE FOR REDUCER

EF98



ANCOR PIN

VESTIBULAR	PALATAL
EF.Ancor-V	EF.Ancor-P

ANCOR PIN DRILL

EF64.AP



DEPTH PROBE

EF3



TITANIUM TWEEZER

EF2

BRIDGE ABUTMENT 20°



NECK 0.1 mm	NECK 1 mm	NECK 2 mm	
EF37.3.5-0.1-20	EF37.3.5-1.0-20	EF37.3.5-2.0-20	○
EF37.4.0-0.1-20	EF37.4.0-1.0-20	EF37.4.0-2.0-20	○
EF37.4.5-0.1-20	EF37.4.5-1.0-20	EF37.4.5-2.0-20	○
EF37.5.0-0.1-20	EF37.5.0-1.0-20	EF37.5.0-2.0-20	○
EF37.5.5-0.1-20	EF37.5.5-1.0-20	EF37.5.5-2.0-20	○

MILLABLE ABUTMENT



NECK 0.1 mm	
EF40F.3.5-0.1	○
EF40F.4.0-0.1	○
EF40F.4.5-0.1	○
EF40F.5.0-0.1	○
EF40F.5.5-0.1	○

SINGLE TOOTH ABUTMENT



NECK 0.1 mm	NECK 1 mm	NECK 2 mm	
EF40.3.5-0.1	EF40.3.5-1.0	EF40.3.5-2.0	○
EF40.4.0-0.1	EF40.4.0-1.0	EF40.4.0-2.0	○
EF40.4.5-0.1	EF40.4.5-1.0	EF40.4.5-2.0	○
EF40.5.0-0.1	EF40.5.0-1.0	EF40.5.0-2.0	○
EF40.5.5-0.1	EF40.5.5-1.0	EF40.5.5-2.0	○

BULL ABUTMENT



NECK 1 mm	NECK 2 mm	NECK 3 mm	
EF47.3.5-1.0	EF47.3.5-2.0	EF47.3.5-3.0	○
EF47.4.0-1.0	EF47.4.0-2.0	EF47.4.0-3.0	●
EF47.4.5-1.0	EF47.4.5-2.0	EF47.4.5-3.0	○
EF47.5.0-1.0	EF47.5.0-2.0	EF47.5.0-3.0	●
EF47.5.5-1.0	EF47.5.5-2.0	EF47.5.5-3.0	○

SLEEVE



CODE	
EF64SL.3.5	○
EF64SL.4.0-4.5	● ○
EF64SL.5.0-5.5	● ○

GUIDING CYLINDER



CODE	
EF86.3.5	○
EF86.4.0-4.5	● ○
EF86.5.0-5.5	● ○

FIXING SCREW FOR
GUIDING CYLINDER

CODE	
EF86V.3.5	○
EF86V.4.0-4.5	● ○
EF86V.5.0-5.5	● ○

SPECIAL GUIDING CYLINDER



2 mm	3 mm	5 mm	
EF86.N-S2	EF86.N-S3	EF86.N-S5	○
EF86.R-S2	EF86.R-S3	EF86.R-S5	● ○
EF86.W-S2	EF86.W-S3	EF86.W-S5	● ○

FIXING SCREW FOR SPECIAL GUIDING CYLINDER



2 mm	3 mm	5 mm	
EF86V.N-S2	EF86V.N-S3	EF86V.N-S5	○
EF86V.R-S2	EF86V.R-S3	EF86V.R-S5	● ○
EF86V.W-S2	EF86V.W-S3	EF86V.W-S5	● ○

IMPRESSION COPING

- Ø 3.5
- Ø 4.0
- Ø 4.5
- Ø 5.0
- Ø 5.5

WITH ENGAGEMENT FIXTURE - SINGLE TOOTH
(closed tray)



CODE	
EF60.3.5	○
EF60.4.0	○
EF60.4.5	○
EF60.5.0	○
EF60.5.5	○

WITH ENGAGEMENT FIXTURE - SINGLE TOOTH
(open tray)



CODE	
EF60Dpa.3.5	○
EF60Dpa.4.0	○
EF60Dpa.4.5	○
EF60Dpa.5.0	○
EF60Dpa.5.5	○

WITH ENGAGEMENT FIXTURE - BRIDGE
(open tray)



CODE
EF60Ppa.3.5
EF60Ppa.4.0
EF60Ppa.4.5
EF60Ppa.5.0
EF60Ppa.5.5

SINGLE TOOTH ABUTMENT
(closed tray)

CODE
EF61A.3.5
EF61A.4.0
EF61A.4.5
EF61A.5.0
EF61A.5.5

SINGLE TOOTH ABUTMENT
(open tray)

CODE	
EF61Apa.3.5	○
EF61Apa.4.0	○
EF61Apa.4.5	○
EF61Apa.5.0	○
EF61Apa.5.5	○

BRIDGE ABUTMENT 20°
(open tray)

CODE	
EF60Apa20.3.5	○
EF60Apa20.4.0	○
EF60Apa20.4.5	○
EF60Apa20.5.0	○
EF60Apa20.5.5	○

BRIDGE ABUTMENT 20°
(closed tray)

CODE	
EF60A20.3.5	○
EF60A20.4.0	○
EF60A20.4.5	○
EF60A20.5.0	○
EF60A20.5.5	○

BULL ABUTMENT TRANSFER - CATALOG RHEIN
(closed tray)

144MTE

SCREW FOR IMPRESSION COPING

Open and closed tray

BRIDGE Ø 3.5

BRIDGE Ø 4.0/5.5

SINGLE TOOTH Ø 3.5

SINGLE TOOTH Ø 4.0/5.5

ENGAGEMENT FIXTURE Ø 3.5

ENGAGEMENT FIXTURE Ø 4.0/5.5

CODE
EF57P.3.5
EF57P.4.0-5.5
EF57DS.3.5
EF57DS.4.0-5.5
EF57FIX.3.5
EF57FIX.4.0-5.5

REPLICA ABUTMENT

- Ø 3.5
- Ø 4.0
- Ø 4.5
- Ø 5.0
- Ø 5.5

REPLICA ABUTMENT - BRIDGE 20°



x 12	
EF63A20.3.5-12	○
EF63A20.4.0-12	○
EF63A20.4.5-12	○
EF63A20.5.0-12	○
EF63A20.5.5-12	○

REPLICA ABUTMENT - SINGLE TOOTH



x 12	
EF63AS.3.5-12	○
EF63AS.4.0-12	○
EF63AS.4.5-12	○
EF63AS.5.0-12	○
EF63AS.5.5-12	○

REPLICA BULL ABUTMENT (Catalog Rhein)

144AE



FIXTURE REPLICA

x 12	
EF63.3.5-12	○
EF63.4.0-5.5-12	○ ○ ○ ○

TEMPORARY CYLINDER

- Ø 3.5
- Ø 4.0
- Ø 4.5
- Ø 5.0
- Ø 5.5

TI TEMPORARY CYLINDER - BRIDGE



20 mm	
EF44.3.5-20	○
EF44.4.0-20	○
EF44.4.5-20	○
EF44.5.0-20	○
EF44.5.5-20	○

TI TEMPORARY CYLINDER - SINGLE TOOTH



CODE	
EF44S.3.5	○
EF44S.4.0	○
EF44S.4.5	○
EF44S.5.0	○
EF44S.5.5	○

TEMPORARY CYLINDER - BRIDGE (STEEL)



20 mm	
EF44.3.5-20stee	○
EF44.4.0-20stee	○
EF44.4.5-20stee	○
EF44.5.0-20stee	○
EF44.5.5-20stee	○

TEMPORARY CYLINDER - SINGLE TOOTH (STEEL)



CODE	
EF44S.3.5-stee	○
EF44S.4.0-stee	○
EF44S.4.5-stee	○
EF44S.5.0-stee	○
EF44S.5.5-stee	○

TEMPORARY ABUTMENT

- Ø 3.5
- Ø 4.0
- Ø 4.5
- Ø 5.0
- Ø 5.5

TI TEMPORARY ABUTMENT - BRIDGE



NECK 0.1 mm	NECK 1 mm	NECK 2 mm	
EF38.3.5-0.1	EF38.3.5-1.0	EF38.3.5-2.0	○
EF38.4.0-0.1	EF38.4.0-1.0	EF38.4.0-2.0	○
EF38.4.5-0.1	EF38.4.5-1.0	EF38.4.5-2.0	○
EF38.5.0-0.1	EF38.5.0-1.0	EF38.5.0-2.0	○
EF38.5.5-0.1	EF38.5.5-1.0	EF38.5.5-2.0	○

TI TEMPORARY ABUTMENT - SINGLE TOOTH



NECK 0.1 mm	NECK 1 mm	NECK 2 mm	
EF42.3.5-0.1	EF42.3.5-1.0	EF42.3.5-2.0	○
EF42.4.0-0.1	EF42.4.0-1.0	EF42.4.0-2.0	○
EF42.4.5-0.1	EF42.4.5-1.0	EF42.4.5-2.0	○
EF42.5.0-0.1	EF42.5.0-1.0	EF42.5.0-2.0	○
EF42.5.5-0.1	EF42.5.5-1.0	EF42.5.5-2.0	○

CASTABLE TEMPORARY CYLINDER FOR WAX-UP

CASTABLE TEMPORARY CYLINDER FOR WAX-UP - BRIDGE



20 mm	
EF45w20.3.5	○
EF45w20.4.0	○
EF45w20.4.5	○
EF45w20.5.0	○
EF45w20.5.5	○

- Ø 3.5
- Ø 4.0
- Ø 4.5
- Ø 5.0
- Ø 5.5

CASTABLE TEMPORARY CYLINDER FOR WAX-UP - SINGLE TOOTH



CODE	
EF44w.3.5	○
EF44w.4.0	○
EF44w.4.5	○
EF44w.5.0	○
EF44w.5.5	○

CASTABLE COMPONENT



CODE	
EFW.3.5	○
EFW.4.0-5.5	○ ○ ○ ○

CASTABLE TEMPORARY ABUTMENT FOR WAX-UP

CASTABLE TEMPORARY ABUTMENT FOR WAX-UP - BRIDGE



CODE
EF45Aw.3.5
EF45Aw.4.0
EF45Aw.4.5
EF45Aw.5.0
EF45Aw.5.5



○ Ø 3.5

○ Ø 4.0

○ Ø 4.5

○ Ø 5.0

○ Ø 5.5

CASTABLE TEMPORARY ABUTMENT FOR WAX-UP - SINGLE TOOTH



CODE
EF44Aw.3.5
EF44Aw.4.0
EF44Aw.4.5
EF44Aw.5.0
EF44Aw.5.5



ACCESSORIES

- Ø 3.5
- Ø 4.0
- Ø 4.5
- Ø 5.0
- Ø 5.5



DRILL MOUNTABUTMENT Ø 3.5

20 mm	28 mm	36 mm
EF75T.3.5-20	EF75T.3.5-28	EF75T.3.5-36



DRILL MOUNTABUTMENT Ø 4.0/5.5

20 mm	28 mm	36 mm
EF75T.4.0/5.5-20	EF75T.4.0/5.5-28	EF75T.4.0/5.5-36



MANUAL MOUNTABUTMENT Ø 3.5

20 mm	28 mm	36 mm
EF75M.3.5-20	EF75M.3.5-28	EF75M.3.5-36



MANUAL MOUNTABUTMENT Ø 4.0/5.5

20 mm	28 mm	36 mm
EF75M.4.0/5.5-20	EF75M.4.0/5.5-28	EF75M.4.0/5.5-36



DRILL SCREWDRIVER

20 mm	28 mm	36 mm
EF76T-20	EF76T-28	EF76T-36



MANUAL SCREWDRIVER

20 mm	28 mm	36 mm
EF76M-20	EF76M-28	EF76M-36

STEEL ABUTMENT FOR LABORATORY - BRIDGE 20°

NECK 0.1 mm	NECK 1 mm	NECK 2 mm
EF37.3.5LAB.0.1	EF37.3.5LAB.1.0	EF37.3.5LAB.2.0
EF37.4.0LAB.0.1	EF37.4.0LAB.1.0	EF37.4.0LAB.2.0
EF37.4.5LAB.0.1	EF37.4.5LAB.1.0	EF37.4.5LAB.2.0
EF37.5.0LAB.0.1	EF37.5.0LAB.1.0	EF37.5.0LAB.2.0
EF37.5.5LAB.0.1	EF37.5.5LAB.1.0	EF37.5.5LAB.2.0



PRODUCTS FOR PROTOTYPING

- Ø 3.5
- Ø 4.0
- Ø 4.5
- Ø 5.0
- Ø 5.5



TEMPORARY CYLINDER SCAN BODIES

CODE	
EF44scan.3.5	○
EF44scan.4.0	○



FIXTURE REPLICA FOR PROTOTYPING

CODE	
EF63P.3.5	○
EF63P.4.0-5.5	○ ○ ○ ○



FIXING SCREW Ø 4.0/5.5

SINGLE TOOTH ABUTMENT

SINGLE TOOTH ANGLED ABUTMENT 15°/30°/40°/45°

BRIDGE ANGLED ABUTMENT 15°/30°/40°/45°

SINGLE TOOTH ABUTMENT 15°/30°/40°/45° - LABORATORY

BRIDGE ABUTMENT 15°/30°/40°/45° - LABORATORY

MILLABLE ABUTMENT

ZIGOMA IMPLANTS ABUTMENT 30°/40°/45°

SINGLE TOOTH TEMPORARY ABUTMENT

BRIDGE TEMPORARY ABUTMENT

SINGLE TOOTH TEMPORARY ABUTMENT ANGLED 15°/30°

SINGLE TOOTH CASTABLE TEMPORARY ABUTMENT WAX-UP

BRIDGE CASTABLE TEMPORARY ABUTMENT WAX-UP

EF55F



FIXING SCREW Ø 3.5

SINGLE TOOTH ABUTMENT

SINGLE TOOTH ANGLED ABUTMENT 15°/30°/40°/45°

BRIDGE ANGLED ABUTMENT 15°/30°/40°/45°

SINGLE TOOTH ABUTMENT 15°/30°/40°/45° - LABORATORY

BRIDGE ABUTMENT 15°/30°/40°/45° - LABORATORY

MILLABLE ABUTMENT

ZIGOMA IMPLANTS ABUTMENT 30°/40°/45°

SINGLE TOOTH TEMPORARY ABUTMENT

BRIDGE TEMPORARY ABUTMENT

SINGLE TOOTH TEMPORARY ABUTMENT ANGLED 15°/30°

SINGLE TOOTH CASTABLE TEMPORARY ABUTMENT WAX-UP

BRIDGE CASTABLE TEMPORARY ABUTMENT WAX-UP

EF55F-3.5





PROSTHETIC SCREW Ø 4.0/5.5
 BRIDGE ABUTMENT
 BRIDGE TEMPORARY CYLINDER
 TBRIDGE TEMPORARY CYLINDER WAX-UP

EF56



PROSTHETIC SCREW Ø 3.5
 BRIDGE ABUTMENT
 BRIDGE TEMPORARY CYLINDER
 BRIDGE TEMPORARY CYLINDER WAX-UP

EF56-3.5



PROSTHETIC SCREW Ø 4.0/5.5
 SINGLE TOOTH TEMPORARY CYLINDER
 SINGLE TOOTH TEMPORARY CYLINDER WAX-UP

EF55



PROSTHETIC SCREW Ø 3.5
 SINGLE TOOTH TEMPORARY CYLINDER
 SINGLE TOOTH TEMPORARY CYLINDER WAX-UP

EF55-3.5



IMPRESSION COPING SCREW

open and cose tray

BRIDGE Ø 3.5

BRIDGE Ø 4.0/5.5

SINGLE TOOTH Ø 3.5

SINGLE TOOTH Ø 4.0/5.5

ENGAGEMENT FIXTURE Ø 3.5

ENGAGEMENT FIXTURE Ø 4.0/5.5

CODE
EF57P.3.5
EF57P.4.0-5.5
EF57DS.3.5
EF57DS.4.0-5.5
EF57FIX.3.5
EF57FIX.4.0-5.5



SCREWS FOR KIT 15 ° SINGLE TOOTH OR BRIDGE

PROSTHETIC SCREW TEMPORARY CYLINDER/ABUTMENT

SCREW UNION IMPRESSION COPING/ABUTMENT

SCREW UNION REPLICA ABUTMENT/IMPRESSION COPING

LABORATORY SCREW FOR UNION TEMPORARY CYLINDER/REPLICA ABUTMENT

CODE

EF56AA

EF5715

EF5715RA

EF55LAB

SCREW FOR KIT 30° SINGLE TOOTH OR BRIDGE

PROSTHETIC SCREW TEMPORARY CYLINDER/ABUTMENT

SCREW UNION IMPRESSION COPING/ABUTMENT

SCREW UNION REPLICA ABUTMENT/IMPRESSION COPING

LABORATORY SCREW FOR UNION TEMPORARY CYLINDER/REPLICA ABUTMENT

CODE

EF56AA

EF5730

EF5730RA

EF55LAB

SCREW FOR KIT 40° SINGLE TOOTH OR BRIDGE

PROSTHETIC SCREW TEMPORARY CYLINDER/ABUTMENT

SCREW UNION IMPRESSION COPING/ABUTMENT

SCREW UNION REPLICA ABUTMENT/IMPRESSION COPING

LABORATORY SCREW FOR UNION TEMPORARY CYLINDER/REPLICA ABUTMENT

CODE

EF56AA

EF5740

EF5740RA

EF55LAB

SCREW FOR KIT 45° SINGLE TOOTH OR BRIDGE

PROSTHETIC SCREW TEMPORARY CYLINDER/ABUTMENT

SCREW UNION IMPRESSION COPING/ABUTMENT

SCREW UNION REPLICA ABUTMENT/IMPRESSION COPING

LABORATORY SCREW FOR UNION TEMPORARY CYLINDER/REPLICA ABUTMENT

CODE

EF56AA

EF5745

EF5745RA

EF55LAB

SCREW FOR KIT ZIGOMA IMPLANT BRIDGE 30°/40°/45°

PROSTHETIC SCREW TEMPORARY CYLINDER/ABUTMENT

SCREW UNION IMPRESSION COPING/ABUTMENT

SCREW UNION REPLICA ABUTMENT/IMPRESSION COPING

LABORATORY SCREW FOR UNION TEMPORARY CYLINDER/REPLICA ABUTMENT

CODE

EF56AA

EF5748

EF5748RA

EF55LAB



DENTAL IMPLANTS

Monophasic line

CONICAL, CYLINDRICAL, D3 - D4 SOFT BONE, MINIMPLANTS



IMPLANT Characteristics

Monophasic line

The Easyfor monophasic implant is a dental implant produced in three shapes, cylindrical, conical and D3-D4 soft bone; is made of medical grade titanium, grade 4.

The monophasic implant is a very versatile implant and can be used in all areas of the mouth, for single elements, or for 3/4 unit bridges if the prosthesis is screwed and / or cemented. It can also be used for Toronto type prostheses with computer guided implantology. It can also be used in cases of post-extraction implantology.

The micro-thread, the geometry of the thread, the surface treatment and the platform switching guarantee a rapid and lasting osseointegration.

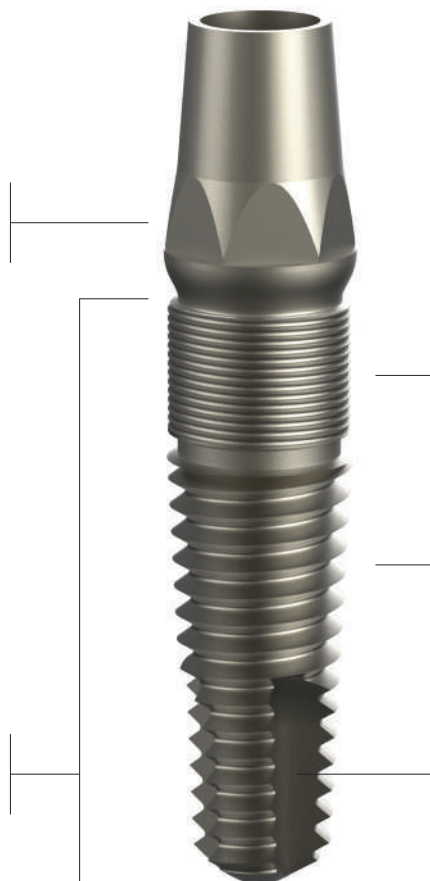
The drains along the thread make the implant simple to insert and suitable for any type of clinical experience. The collar is shiny and combined with platform switching ensures an excellent mucous seal around the implant itself.

Thanks to its size, it makes the system easy to parallelize even in cases of particularly pronounced inclinations. The flat part of the prosthesis support variable in diameter from 3.5mm to 5.5mm facilitates the support of the prosthesis.

PLATFORM SWITCHING

- the particular shape of the abutment and the smaller diameter of the implant diameter allow optimal adhesion of the soft tissue
- to obtain an optimal aesthetic result
- to prevent and/or significantly reduce the loss of marginal bone

Variable length
from 8 to 18 mm



MICRO THREAD

- Promotes and maintains the formation of bone tissue in the cortical area

SANDBLASTED SURFACE AND ACIDIFIED

- to increase the adhesion between bone cells and the implant

Unloading area

MONOPHASIC CONICAL

- Ø 3.5
- Ø 4.0
- Ø 4.5
- Ø 5.0
- Ø 5.5

NORMAL

	8 mm	9 mm	10 mm	11 mm	12 mm
○	EF10S.3.5-8	EF10S.3.5-9	EF10S.3.5-10	EF10S.3.5-11	EF10S.3.5-12
○	EF10S.4.0-8	EF10S.4.0-9	EF10S.4.0-10	EF10S.4.0-11	EF10S.4.0-12
○	EF10S.4.5-8	EF10S.4.5-9	EF10S.4.5-10	EF10S.4.5-11	EF10S.4.5-12
○	EF10S.5.0-8	EF10S.5.0-9	EF10S.5.0-10	EF10S.5.0-11	EF10S.5.0-12
○	EF10S.5.5-8	EF10S.5.5-9	EF10S.5.5-10	EF10S.5.5-11	EF10S.5.5-12

LONG

	13 mm	14 mm	15 mm	16 mm	18 mm
○	EF10S.3.5-13	EF10S.3.5-14	EF10S.3.5-15	EF10S.3.5-16	EF10S.3.5-18
○	EF10S.4.0-13	EF10S.4.0-14	EF10S.4.0-15	EF10S.4.0-16	EF10S.4.0-18
○	EF10S.4.5-13	EF10S.4.5-14	EF10S.4.5-15	EF10S.4.5-16	EF10S.4.5-18
○	EF10S.5.0-13	EF10S.5.0-14	EF10S.5.0-15	EF10S.5.0-16	EF10S.5.0-18
○	EF10S.5.5-13	EF10S.5.5-14	EF10S.5.5-15	EF10S.5.5-16	EF10S.5.5-18



MONOPHASIC CYLINDRICAL

- Ø 3.5
- Ø 4.0
- Ø 4.5
- Ø 5.0
- Ø 5.5

NORMAL

	8 mm	9 mm	10 mm	11 mm	12 mm
○	EF12S.3.5-8	EF12S.3.5-9	EF12S.3.5-10	EF12S.3.5-11	EF12S.3.5-12
○	EF12S.4.0-8	EF12S.4.0-9	EF12S.4.0-10	EF12S.4.0-11	EF12S.4.0-12
○	EF12S.4.5-8	EF12S.4.5-9	EF12S.4.5-10	EF12S.4.5-11	EF12S.4.5-12
○	EF12S.5.0-8	EF12S.5.0-9	EF12S.5.0-10	EF12S.5.0-11	EF12S.5.0-12
○	EF12S.5.5-8	EF12S.5.5-9	EF12S.5.5-10	EF12S.5.5-11	EF12S.5.5-12

LONG

	13 mm	14 mm	15 mm	16 mm	18 mm
○	EF12S.3.5-13	EF12S.3.5-14	EF12S.3.5-15	EF12S.3.5-16	EF12S.3.5-18
○	EF12S.4.0-13	EF12S.4.0-14	EF12S.4.0-15	EF12S.4.0-16	EF12S.4.0-18
○	EF12S.4.5-13	EF12S.4.5-14	EF12S.4.5-15	EF12S.4.5-16	EF12S.4.5-18
○	EF12S.5.0-13	EF12S.5.0-14	EF12S.5.0-15	EF12S.5.0-16	EF12S.5.0-18
○	EF12S.5.5-13	EF12S.5.5-14	EF12S.5.5-15	EF12S.5.5-16	EF12S.5.5-18



MONOPHASIC D3-D4

- Ø 3.5
- Ø 4.0
- Ø 4.5
- Ø 5.0
- Ø 5.5

NORMAL

	8 mm	9 mm	10 mm	11 mm	12 mm
○	EF14S.3.5-8	EF14S.3.5-9	EF14S.3.5-10	EF14S.3.5-11	EF14S.3.5-12
○	EF14S.4.0-8	EF14S.4.0-9	EF14S.4.0-10	EF14S.4.0-11	EF14S.4.0-12
○	EF14S.4.5-8	EF14S.4.5-9	EF14S.4.5-10	EF14S.4.5-11	EF14S.4.5-12
○	EF14S.5.0-8	EF14S.5.0-9	EF14S.5.0-10	EF14S.5.0-11	EF14S.5.0-12
○	EF14S.5.5-8	EF14S.5.5-9	EF14S.5.5-10	EF14S.5.5-11	EF14S.5.5-12

LONG

	13 mm	14 mm	15 mm	16 mm	18 mm
○	EF14S.3.5-13	EF14S.3.5-14	EF14S.3.5-15	EF14S.3.5-16	EF14S.3.5-18
○	EF14S.4.0-13	EF14S.4.0-14	EF14S.4.0-15	EF14S.4.0-16	EF14S.4.0-18
○	EF14S.4.5-13	EF14S.4.5-14	EF14S.4.5-15	EF14S.4.5-16	EF14S.4.5-18
○	EF14S.5.0-13	EF14S.5.0-14	EF14S.5.0-15	EF14S.5.0-16	EF14S.5.0-18
○	EF14S.5.5-13	EF14S.5.5-14	EF14S.5.5-15	EF14S.5.5-16	EF14S.5.5-18



PROTECTION CAP
SINGLE TOOTH



CODE
EF36.3.5
EF36.4.0
EF36.4.5
EF36.5.0
EF36.5.5



- Ø 3.5
- Ø 4.0
- Ø 4.5
- Ø 5.0
- Ø 5.5

DRILLS FOR CONICAL IMPLANT
(TRADITIONAL SURGERY)



UNIVERSAL LANCEOLATE

EF64

UNIVERSAL PRECISION 2 MM

EF65.12	EF65.16
---------	---------

CALIBRATING DRILL

NORMAL	LONG
EF65.1.5.12	EF65.1.5.16
EF65.2.0.12	EF65.2.0.16
EF65.2.5.12	EF65.2.5.16
EF65.3.0.12	EF65.3.0.16
EF65.3.5.12	EF65.3.5.16



SHOULDER DRILL

CODE SHOULDER
EF65Sp.3.5
EF65Sp.4.0
EF65Sp.4.5
EF65Sp.5.0
EF65Sp.5.5



TAPS

CODE TAPS
EF83.3.5-con
EF83.4.0-con
EF83.4.5-con
EF83.5.0-con
EF83.5.5-con



DRILLS FOR CYLINDRICAL IMPLANT (TRADITIONAL SURGERY)

- Ø 3.5
- Ø 4.0
- Ø 4.5
- Ø 5.0
- Ø 5.5



UNIVERSAL LANCEOLATE

EF64

UNIVERSAL PRECISION 2 MM

EF65.12 EF65.16

CALIBRATING DRILL

NORMAL	LONG	
EF66.2.7.12	EF66.2.7.16	○
EF66.3.2.12	EF66.3.2.16	○
EF66.3.7.12	EF66.3.7.16	○
EF66.4.2.12	EF66.4.2.16	○
EF66.4.7.12	EF66.4.7.16	○

SHOULDER DRILL

CODE SHOULDER	
EF66Sp.3.5	○
EF66Sp.4.0	○
EF66Sp.4.5	○
EF66Sp.5.0	○
EF66Sp.5.5	○

TAPS

CODE TAPS	
EF83.3.5-cil	○
EF83.4.0-cil	○
EF83.4.5-cil	○
EF83.5.0-cil	○
EF83.5.5-cil	○

DRILLS FOR D3-D4 IMPLANT (TRADITIONAL SURGERY)

- Ø 3.5
- Ø 4.0
- Ø 4.5
- Ø 5.0
- Ø 5.5



UNIVERSAL LANCEOLATE

EF64

UNIVERSAL PRECISION 2 MM

EF65.12 EF65.16

STEP DRILL

NORMAL	LONG	
EF67.2.0/2.7.12	EF67.2.0-2.7.16	○
EF67.2.5/3.0.12	EF67.2.5-3.0.16	○
EF67.3.0/3.5.12	EF67.3.0-3.5.16	○
EF67.3.5/4.0.12	EF67.3.5-4.0.16	○
EF67.4.0/4.5.12	EF67.4.0-4.5.16	○

SHOULDER DRILL

CODE SHOULDER	
EF67.3.5	○
EF67.4.0	○
EF67.4.5	○
EF67.5.0	○
EF67.5.5	○

TAPS

CODE TAPS	
EF83.3.5-D3	○
EF83.4.0-D3	○
EF83.4.5-D3	○
EF83.5.0-D3	○
EF83.5.5-D3	○



DRILLS FOR CONICAL IMPLANT (GUIDED SURGERY)

- Ø 3.5
- Ø 4.0
- Ø 4.5
- Ø 5.0
- Ø 5.5

ANCOR PIN DRILL

EF64.AP

UNIVERSAL PRECISION 2 MM

EF65G.12	EF65G.16
----------	----------

START DRILL

CODE	
EF.START.N	○
EF.START.R	○
EF.START.W	○

CALIBRATING DRILL

NORMAL	LONG	
EF65G.1.5.12	EF65G.1.5.16	○
EF65G.2.0.12	EF65G.2.0.16	○
EF65G.2.5.12	EF65G.2.5.16	○
EF65G.3.0.12	EF65G.3.0.16	○
EF65G.3.5.12	EF65G.3.5.16	○

SHOULDER DRILL

CODE SHOULDER	
EF65GSp.3.5	○
EF65GSp.4.0	○
EF65GSp.4.5	○
EF65GSp.5.0	○
EF65GSp.5.5	○

TAPS

CODE TAPS	
EF83G.3.5-con	○
EF83G.4.0-con	○
EF83G.4.5-con	○
EF83G.5.0-con	○
EF83G.5.5-con	○

DRILLS FOR CYLINDRICAL IMPLANT (GUIDED SURGERY)

- Ø 3.5
- Ø 4.0
- Ø 4.5
- Ø 5.0
- Ø 5.5

ANCOR PIN DRILL

EF64.AP

UNIVERSAL PRECISION 2 MM

EF65G.12	EF65G.16
----------	----------

START DRILL

CODE	
EF.START.N	○
EF.START.R	○
EF.START.W	○

CALIBRATING DRILL

NORMAL	LONG	
EF66G.2.7.12	EF66G.2.7.16	○
EF66G.3.2.12	EF66G.3.2.16	○
EF66G.3.7.12	EF66G.3.7.16	○
EF66G.4.2.12	EF66G.4.2.16	○
EF66G.4.7.12	EF66G.4.7.16	○

SHOULDER DRILL

CODE SHOULDER	
EF66GSp.3.5	○
EF66GSp.4.0	○
EF66GSp.4.5	○
EF66GSp.5.0	○
EF66GSp.5.5	○

TAPS

CODE TAPS	
EF83G.3.5-cil	○
EF83G.4.0-cil	○
EF83G.4.5-cil	○
EF83G.5.0-cil	○
EF83G.5.5-cil	○

DRILLS FOR D3-D4 IMPLANT (GUIDED SURGERY)

- Ø 3.5
- Ø 4.0
- Ø 4.5
- Ø 5.0
- Ø 5.5

ANCOR PIN DRILL

EF64.AP

UNIVERSAL PRECISION 2 MM

EF65G.12	EF65G.16
----------	----------

START DRILL

CODE	
EF.START.N	○
EF.START.R	○
EF.START.W	○

STEP DRILL

NORMAL	LONG	
EF67G.2.0/2.7.12	EF67G.2.0/2.7.16	○
EF67G.2.5/3.0.12	EF67G.2.5/3.0.16	○
EF67G.3.0/3.5.12	EF67G.3.0/3.5.16	○
EF67G.3.5/4.0.12	EF67G.3.5/4.0.16	○
EF67G.4.0/4.5.12	EF67G.4.0/4.5.16	○

SHOULDER DRILL

CODE SHOULDER	
EF67G.3.5	○
EF67G.4.0	○
EF67G.4.5	○
EF67G.5.0	○
EF67G.5.5	○

TAPS

CODE TAPS	
EF83G.3.5-D3	○
EF83G.4.0-D3	○
EF83G.4.5-D3	○
EF83G.5.0-D3	○
EF83G.5.5-D3	○

SURGICAL ACCESSORIES

- Ø 3.5
- Ø 4.0
- Ø 4.5
- Ø 5.0
- Ø 5.5



DRILL MOUNTER TRADITIONAL SURGERY

9 mm	13 mm	17 mm
EF91T.3.5-9	EF91T.3.5-13	EF91T.3.5-17
EF91T.4.0/5.5-9	EF91T.4.0/5.5-13	EF91T.4.0/5.5-17



MANUAL MOUNTER TRADITIONAL SURGERY

9 mm	13 mm	17 mm
EF91.3.5-9	EF91.3.5-13	EF91.3.5-17
EF91.4.0/5.5-9	EF91.4.0/5.5-13	EF91.4.0/5.5-17



MOUNTER GUIDED SURGERY

CODE
EF91G.3.5
EF91G.4.0/4.5
EF91G.5.0/5.5



SPECIAL MOUNTER GUIDED SURGERY

+2 mm	+3 mm	+5 mm
EF91G.N-S2	EF91G.N-S3	EF91G.N-S5
EF91G.R-S2	EF91G.R-S3	EF91G.R-S5
EF91G.W-S2	EF91G.W-S3	EF91G.W-S5



DRILL SCREWDRIVER

20 mm	28 mm	36 mm
EF76T-20	EF76T-28	EF76T-36



MANUAL SCREWDRIVER

20 mm	28 mm	36 mm
EF76M-20	EF76M-28	EF76M-36



RATCHET TORQUE 75 Nw

EF80



RATCHET FISSO

EF80F



RATCHET ADAPTER FOR HEXAGONAL MOUNTER

EF60AD



RATCHET ADAPTER FOR SCREWDRIVER

EF60ADT



DRILL EXTENCTION

EF78



PORTA MOUNTER

EF82



DIRECTION INDICATOR

CODE	
EF84.3.5	○
EF84.4.0	○
EF84.4.5	○
EF84.5.0	○
EF84.5.5	○



TISSUE PUNCH

CODE	
EF72.3.5	○
EF72.4.0	○
EF72.4.5	○
EF72.5.0	○
EF72.5.5	○

COMPUTER GUIDED SURGERY

REDUCER CONICAL-CYLINDRICAL



$\varnothing N$	$\varnothing R$	$\varnothing W$
EF70N.2.0	EF70R.2.0	EF70W.2.0
EF70N.2.7	EF70R.2.7	EF70W.2.7
	EF70R.3.2	EF70W.3.2
	EF70R.3.7	EF70W.3.7
		EF70W.4.2
		EF70W.4.7

RIDUCER D3-D4



$\varnothing N$	$\varnothing R$	$\varnothing W$
EF71N.2.0	EF71R.2.0	EF71W.2.0
EF71N.2.5	EF71R.2.5	EF71W.2.5
	EF71R.3.0	EF71W.3.0
	EF71R.3.5	EF71W.3.5
		EF71W.4.0
		EF71W.4.5



HANDLE FOR RIDUCER

EF98

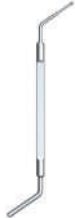


ANCOR PIN

VESTIBULAR	PALATAL
EF.Ancor-V	EF.Ancor-P

ANCOR PIN DRILL

EF64.AP



DEPTH PROBE

EF3



TITANIUM TWEEZER

EF2

SLEEVE



CODE
EF64SL.3.5
EF64SL.4.0-4.5
EF64SL.5.0-5.5



GUIDING CYLINDER



CODE
EF86M.3.5
EF86M.4.0-4.5
EF86M.5.0-5.5



FIXING SCREW FOR GUIDING CYLINDER



CODE
EF86MV.3.5
EF86MV.4.0-4.5
EF86MV.5.0-5.5



SPECIAL GUIDING CYLINDER



2 mm	3 mm	5 mm
EF86M.N-S2	EF86M.N-S3	EF86M.N-S5
EF86M.R-S2	EF86M.R-S3	EF86M.R-S5
EF86M.W-S2	EF86M.W-S3	EF86M.W-S5



FIXING SCREW FOR SPECIAL GUIDING CYLINDER



2 mm	3 mm	5 mm
EF86MV.N-S2	EF86MV.N-S3	EF86MV.N-S5
EF86MV.R-S2	EF86MV.R-S3	EF86MV.R-S5
EF86MV.W-S2	EF86MV.W-S3	EF86MV.W-S5



IMPRESSION COPING

SINGLE TOOTH
(closed tray)

CODE
EF61A.3.5
EF61A.4.0
EF61A.4.5
EF61A.5.0
EF61A.5.5



○ Ø 3.5

○ Ø 4.0

○ Ø 4.5

○ Ø 5.0

○ Ø 5.5

SINGLE TOOTH
(open tray)



CODE
EF61Apa.3.5
EF61Apa.4.0
EF61Apa.4.5
EF61Apa.5.0
EF61Apa.5.5



SCREW IMPRESSION COPING

Open and closed tray

SINGLE TOOTH Ø 3.5

SINGLE TOOTH Ø 4.0/5.5

CODE
EF57DS.3.5
EF57DS.4.0-5.5

SINGLE TOOTH REPLICA ABUTMENT



CODE
EF63AS.3.5-12
EF63AS.4.0-12
EF63AS.4.5-12
EF63AS.5.0-12
EF63AS.5.5-12



TEMPORARY CYLINDER

- Ø 3.5
- Ø 4.0
- Ø 4.5
- Ø 5.0
- Ø 5.5

BRIDGE TEMPORARY CYLINDER



CODE	
EF44M.3.5	○
EF44M.4.0	○
EF44M.4.5	○
EF44M.5.0	○
EF44M.5.5	○

SINGLE TOOTH TEMPORARY CYLINDER



CODE	
EF44S.3.5	○
EF44S.4.0	○
EF44S.4.5	○
EF44S.5.0	○
EF44S.5.5	○

BRIDGE TEMPORARY CYLINDER (STEEL)



CODE	
EF44M.3.5-steel	○
EF44M.4.0-steel	○
EF44M.4.5-steel	○
EF44M.5.0-steel	○
EF44M.5.5-steel	○

SINGLE TOOTH TEMPORARY CYLINDER (STEEL)



CODE	
EF44S.3.5-steel	○
EF44S.4.0-steel	○
EF44S.4.5-steel	○
EF44S.5.0-steel	○
EF44S.5.5-steel	○



CASTABLE TEMPORARY CYLINDER WAX-UP

CASTABLE TEMPORARY CYLINDER WAX-UP - BRIDGE



20 mm	
EF45Mw.3.5	○
EF45Mw.4.0	○
EF45Mw.4.5	○
EF45Mw.5.0	○
EF45Mw.5.5	○



- Ø 3.5
- Ø 4.0
- Ø 4.5
- Ø 5.0
- Ø 5.5

CASTABLE TEMPORARY CYLINDER WAX-UP - SINGLE TOOTH



CODE	
EF44w.3.5	○
EF44w.4.0	○
EF44w.4.5	○
EF44w.5.0	○
EF44w.5.5	○



CASTABLE COMPONENT



CODE	
EFW.3.5	○
EFW.4.0-5.5	○ ○ ○ ○



ACCESSORIES

- Ø 3.5
- Ø 4.0
- Ø 4.5
- Ø 5.0
- Ø 5.5



DRILL SCREWDRIVER

20 mm	28 mm	36 mm
EF76T-20	EF76T-28	EF76T-36



MANUAL SCREWDRIVER

20 mm	28 mm	36 mm
EF76M-20	EF76M-28	EF76M-36

PRODUCTS FOR PROTOTYPING



TEMPORARY CYLINDER
SCAN BODIES- BRIDGE

CODE	
EF44scan.3.5	○
EF44scan.4.0	○



TEMPORARY CYLINDER
SCAN BODIES- SINGLE TOOTH

CODE	
EF44Sscan.3.5	○
EF44Sscan.4.0	○



PROSTHETIC SCREW Ø 4.0/5.5
SINGLE TOOTH TEMPORARY CYLINDER
SINGLE TOOTH TEMPORARY CYLINDER WAX-UP

EF55

-
-
-
-



PROSTHETIC SCREW Ø 3.5
SINGLE TOOTH TEMPORARY CYLINDER
SINGLE TOOTH TEMPORARY CYLINDER WAX-UP

EF55-3.5

-

SCREW IMPRESSION COPING

Open and closed tray

SINGLE TOOTH Ø 3.5

SINGLE TOOTH Ø 4.0/5.5

CODE
EF57DS.3.5
EF57DS.4.0-5.5





OTHER IMPLANTS

MINI IMPLANTS - ZYGOMATIC - SHORT



IMPLANT Characteristics

Mini implants

The mini-implants supplied with the ball head have a diameter of 2.8mm, the thread pitch is self-tapping and allows you to drill the bone with a single drill. They are produced in medical grade 5 titanium and the surface is sandblasted SLA, with double acidification to increase the contact surface.

The implants are equipped with a transmucosal neck and self-tapping threads that allow for better insertion and ensure high primary stability; they are sold in sterile packaging and are available in diameter 2.8 mm in 5 different heights (L. 10-11-12-13-14 mm).

The Easyfor mini-implants allow you to achieve high primary stability using a simple but well-defined surgical protocol.

The insertion can be completed without a flap and sometimes using the patient's old prosthesis.

SPECIFIC PROPERTIES

The line of round head mini-implants grants immediate and prolonged stability and functionality of removable prostheses. They are supplied already equipped with a medium retention prosthetic matrix.

- ball head compatible with RHEIN prosthetic components
- hexagon for insertion with drill moulder



smooth transmucosal neck

self-tapping with compression threads for great primary stability

MINI IMPLANT

○ Ø 2.8



	10 mm	11 mm	12 mm	13 mm	14 mm
	EF20.2.8-10	EF20.2.8-11	EF20.2.8-12	EF20.2.8-13	EF20.2.8-14



CALIBRATING DRILL
Universal lanceolate

EF64.2.3



MOUNTER

EF81.2.3

REFERENCE CATALOG RHEIN

- Mobile Prosthesis Retention Caps
- Bull abutment
- Impression coping
- Replica abutments

IMPLANT Characteristics

Zygomatic implant

The use of zygomatic fixtures in case of very serious atrophy of the jaw, and when you do not want to practice regenerative techniques in the upper jaw, is the only implant solution available for those patients with total or partial edentulism.

The zygomatic fixtures are ideal for an immediate loading protocol with provisional prosthesis that significantly reduces treatment times with great patient satisfaction.

Easyfor offers lengths from 32.5mm up to 45mm, diameter 4.8mm with sandblasted surface and with double acidification, in commercially pure biocompatible titanium grade 4. The central part of the implant has no thread to better adapt to the mucous membrane of the maxillary sinus .

The connection with the abutment is conical to guarantee the antibacterial seal. 30 °, 40 ° and 45 ° abutments are available to better orient the emergence of the abutment. With computer planning, surgical guidance and a course tailored to your level of experience AIMED AT BOTH EXPERT CLINICS AND BEGINNERS, they make the application of zygomatic fixtures within everyone's reach. The worldwide bibliography reports success rates of 95% at 10 years.

Conical connection with
anti-rotation hexagon

Smooth surface

Surface sandblasted
with double
acidification

Unloading area



Variable
length from
32.5 to 45.0
mm - diameter
4.8 mm



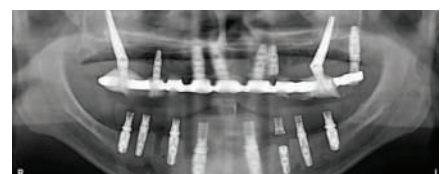
Before the surgery



After the surgery



Pre-surgical x-ray



Post-surgical x-ray

ZYGOMATIC IMPLANT

○ Ø 4.8



32.5 mm	35.0 mm	37.5 mm
EF25.4.8-32.5	EF25.4.8-35.0	EF25.4.8-37.5



40.0 mm	42.5 mm	45.0 mm
EF25.4.8-40.0	EF25.4.8-42.5	EF25.4.8-45.0



ACCESSORIES

BRIDGE ABUTMENT



30°	40°	45°
EF41.4.8-30-0.1	EF41.4.8-40-0.1	EF41.4.8-45-0.1
EF41.4.8-30-2.0	EF41.4.8-40-2.0	EF41.4.8-45-2.0
EF41.4.8-30-3.0	EF41.4.8-40-3.0	EF41.4.8-45-3.0
EF41.4.8-30-4.0	EF41.4.8-40-4.0	EF41.4.8-45-4.0



TEMPORARY CYLINDER

30°	40°	45°
EF44.4.8-30	EF44.4.8-40	EF44.4.8-45



IMPRESSION COPING

30°	40°	45°
EF60Apa30.4.8	EF60Apa40.4.8	EF60Apa45.4.8



REPLICA ABUTMENT

30°	40°	45°
EF63A30.4.8-12	EF63A40.4.8-12	EF63A45.4.8-12



CASTABLE TEMPORARY CYLINDER WAX-UP

30°	40°	45°
EF44W.4.8-30	EF44W.4.8-40	EF44W.4.8-45



PROTECTION CAP (X 30°/40°/45°)

Ø 4.8
EF36ANG.4.8

ZYGOMA IMPLANT DRILL

Ø 2.8
EF64Z.2.8-70

SCREWS FOR BRIDGE ZYGOMATIC

FIXING SCREW ABUTMENT/FIXTURE

PROSTHETIC SCREW TEMPORARY CYLINDER/ABUTMENT

UNION SCREW IMPRESSION COPING/ABUTMENT

UNION SCREW REPLICA ABUTMENT/IMPRESSION COPING

UNION SCREW LABORATORY TEMPORARY CYLINDER/REPLICA ABUTMENT

30° / 40° / 45°
EF55F
EF56AA
EF5748
EF5748RA
EF55LAB

IMPLANT Characteristics

Short Implant

The clinical reality is that many potential implant patients have limited bone height. Short or short implants allow implantologists high diagnostic / therapeutic flexibility in particularly complex clinical situations.

Short Easyfor implants agree to:

- increase the chances of implant insertion in cases of severe bone atrophy;
- reduce bone grafting procedures;
- allow simpler and more predictable treatments.

The conical shape of the implant combined with a spiral shape with high cutting capacity guarantee excellent primary stability of the implant even in the case of not very compact bone.

MICRO THREADING

Cortical micro-threading allows for optimal osseointegration and minimal crestal retraction.

The connection is conical and gives stability to the implant-abutment connection while the hexagonal portion blocks the possibility of rotation. At the bottom of the connection there is an M2 threaded hole that allows you to tighten the abutment to the implant using the relative through screw.

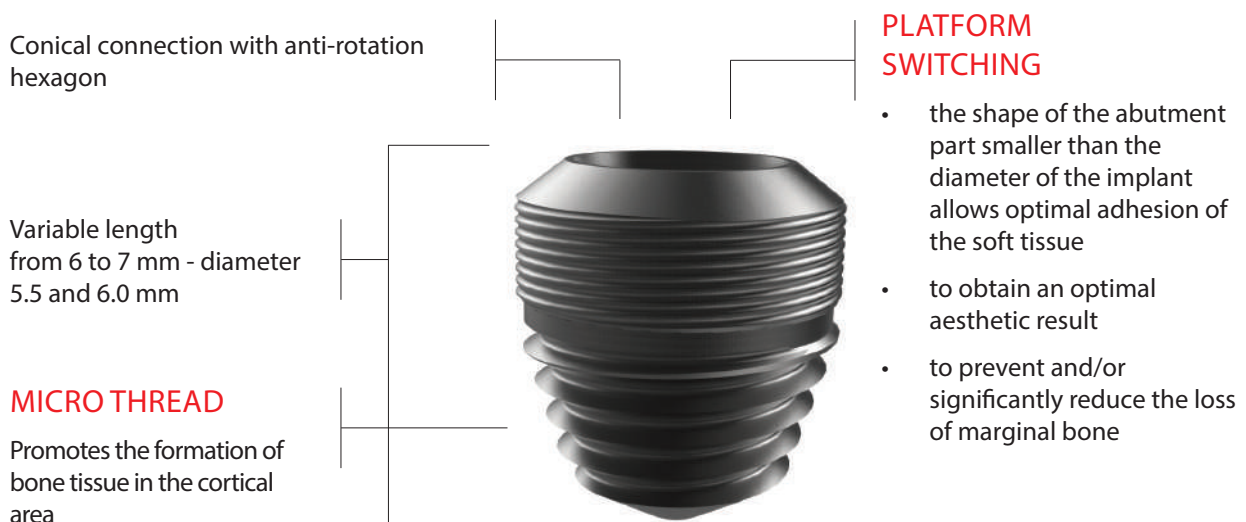
The surface is SLA with sandblasting and double acidification to accelerate the osseointegrative process and therefore reduce the time of bone neogenesis.

The shape of the abutment also guarantees the conical seal and platform switching for this implant.

They are available in 5.5mm and 6mm diameters in 6mm and 7mm lengths.

The drills designed for short implants do not create over-preparation in length and allow to use all the available bone to position the implant.

An EasyformShort kit dedicated to short implants is available for all bone types.



SHORT IMPLANT

○ Ø 5.5
○ Ø 6.0

	6 mm	7 mm
○	EF11.5.5-6	EF11.5.5-7
○	EF11.6.0-6	EF11.6.0-7



ACCESSORIES

BRIDGE ABUTMENT



	0.1 mm	1 mm	2 mm	
	EF37sh.4.5-0.1	EF37sh.4.5-1.0	EF37sh.4.5-2.0	○
	EF37sh.5.5-0.1	EF37sh.5.5-1.0	EF37sh.5.5-2.0	○

SINGLE TOOTH ABUTMENT



	0.1 mm	1 mm	2 mm	
	EF40sh.4.5-0.1	EF40sh.4.5-1.0	EF40sh.4.5-2.0	○
	EF40sh.5.5-0.1	EF40sh.5.5-1.0	EF40sh.5.5-2.0	○

MILLABLE ABUTMENT



	0.1 mm	1 mm	2 mm	
	EF40Fsh.4.5-0.1	EF40Fsh.4.5-1.0	EF40Fsh.4.5-2.0	○
	EF40Fsh.5.5-0.1	EF40Fsh.5.5-1.0	EF40Fsh.5.5-2.0	○

LABORATORY ABUTMENT STEEL



	0.1 mm	1 mm	2 mm	
	EF37sh.4.5LB0.1	EF37sh.4.5LB1.0	EF37sh.4.5LB2.0	○
	EF37sh.5.5LB-0.1	EF37sh.5.5LB-1.0	EF37sh.5.5LB-2.0	○

FIXTURE REPLICAS



EF63sh



PROTECTION CAP - BRIDGE

BRIDGE	
EF35.4.5.20	○
EF35.5.5.20	○



PROTECTION CAP - SINGLE TOOTH

SINGLE TOOTH	
EF36.4.5	○
	○



COVER SCREW

EFsh30	○	○
--------	---	---



ANATOMICAL HEALING SCREW

NECK 2 mm	NECK 4 mm
EFsh33A-2.0	EFsh33A-4.0



IMPRESSION COPING

WITH ENGAGEMENT FIXTURE BRIDGE (OPEN TRAY)
EF60shPpa



IMPRESSION COPING

WITH ENGAGEMENT FIXTURE SINGLE TOOTH (OPEN TRAY)
EFsh60Dpa



IMPRESSION COPING SCREW (OPEN AND CLOSED TRAY)

BRIDGE	SINGLE TOOTH	ENGAGEMENT FIXTURE
EF57P.4.0-5.5	EF57DS.4.0-5.5	EF57FIX.5.5-6.0



TEMPORARY CYLINDER - BRIDGE

20°
EF44.4.5-20
EF44.5.5-20



TI TEMPORARY CYLINDER - SINGLE TOOTH

CODE
EF44S.4.5
EF44S.5.5



CASTABLE TEMPORARY CYLINDER WAX-UP - BRIDGE

20°
EF45w20.4.5
EF45w20.5.5



CASTABLE TEMPORARY CYLINDER WAX-UP - SINGLE TOOTH

CODE
EF44w.4.5
EF44w.5.5



GUIDED CYLINDER + FIXING SCREW

GUIDED CYLINDER	FIXING SCREW
EF86.Short	EF86V.Short





REDUCER

W
EF70W.6.0Sht



MOUNTER - GUIDED SURGERY

EF81Gsh



MANUAL MOUNTER (TRADITIONAL SURGERY)

9 mm	13 mm
EF81.Short.9	EF81.Short.13



DRILL MOUNTER (TRADITIONA SURGERY)

9 mm	13 mm
EF81T.Short.9	EF81T.Short.13

DRILLS GUIDED SURGERY

CALIBRATING Ø 5.2	SHOULDER Ø 6.0
EF65G.5.2sht	EF65GSp.6.0sht

DRILLS TRADITIONAL SURGERY

CALIBRATING Ø 5.2	SHOULDER Ø 6.0
EF65.5.2sht	EF65Sp.6.0sht



KIT ANGLED ABUTMENT

Bridge and single tooth

KIT - ANGLED ABUTMENT 15° SINGLE TOOTH (AVAILABLE IN KIT OR SINGLE PIECES)

	ANGLED ABUTMENT			TEMPORARY CYLINDER	
	EF40.3.5.ANG15	○		EF44S.3.5-15	○
	EF40.4.5.ANG15	○		EF44S.4.5-15	○
	IMPRESSION COPING			REPLICA ABUTMENT	
	EF61Apa15.3.5	○		EF63AS15.3.5-12	○
	EF61Apa15.4.5	○		EF63AS15.4.5-12	○
	CASTABLE TEMPORARY CYLINDER WAX-UP			PROTECTION CAP	
	EF44W.3.5-15	○		EF36ANG.3.5	○
	EF44W.4.5-15	○		EF36ANG.4.5	○

KIT - ANGLED ABUTMENT 15° BRIDGE (AVAILABLE IN KIT OR SINGLE PIECES)

	ANGLED ABUTMENT			TEMPORARY CYLINDER	
	EF41.3.5.ANG15	○		EF44.3.5-15	○
	EF41.4.5.ANG15	○		EF44.4.5-15	○
	IMPRESSION COPING			REPLICA ABUTMENT	
	EF60Apa15.3.5	○		EF63A15.3.5-12	○
	EF60Apa15.4.5	○		EF63A15.4.5-12	○
	CASTABLE TEMPORARY CYLINDER WAX-UP			PROTECTION CAP	
	EF45W.3.5-15	○		EF35.3.5-20	○
	EF45W.4.5-15	○		EF35.4.5-20	○

SCREW KIT 15° SINGLE TOOTH AND BRIDGE

- FIXING SCREW ABUTMENT/FIXTURE 3.5
- FIXING SCREW ABUTMENT/FIXTURE 4.5
- PROSTHETIC SCREW TEMPORARY CYLINDER/ABUTMENT
- UNION SCREW IMPRESSION COPING/ABUTMENT
- UNION SCREW REPLICA ABUTMENT/IMPRESSION COPING
- UNION SCREW X LABORATORY TEMPORARY CYLINDER/REPLICA ABUTMENT

CODE
EF55F.3.5
EF55F
EF56AA
EF5715
EF5715RA
EF55LAB

- Ø 3.5
- Ø 4.0
- Ø 4.5
- Ø 5.0
- Ø 5.5



KIT - ANGLED ABUTMENT 30° SINGLE TOOTH (AVAILABLE IN KIT OR SINGLE PIECES)



ANGLED ABUTMENT

EF40.3.5.ANG30 ○

EF40.4.5.ANG30 ○



TEMPORARY CYLINDER

EF44S.3.5-30 ○

EF44S.4.5-30 ○



IMPRESSION COPING

EF61Apa30.3.5 ○

EF61Apa30.4.5 ○



REPLICA ABUTMENT

EF63AS30.3.5-12 ○

EF63AS15.4.5-12 ○

CASTABLE TEMPORARY
CYLINDER WAX-UP

EF44W.3.5-30 ○

EF44W.4.5-30 ○



PROTECTION CAP

EF36ANG.3.5 ○

EF36.ANG.4.5 ○

KIT - ANGLED ABUTMENT 30° BRIDGE (AVAILABLE IN KIT OR SINGLE PIECES)



ANGLED ABUTMENT

EF41.3.5.ANG30 ○

EF41.4.5.ANG30 ○



TEMPORARY CYLINDER

EF44.3.5-30 ○

EF44.4.0-5.5-30 ○



IMPRESSION COPING

EF60Apa30.3.5 ○

EF60Apa30.4.5 ○



REPLICA ABUTMENT

EF63A30.3.5-12 ○

F63A30.4.5-12 ○

CASTABLE TEMPORARY
CYLINDER WAX-UP

EF45W.3.5-30 ○

EF45W.4.5-30 ○



PTOTECTION CAP

EF35.3.5-20 ○

EF35.4.5-20 ○

SCREW KIT KIT 30° SINGLE TOOTH AND BRIDGE

FIXING SCREW ABUTMENT/FIXTURE 3.5

FIXING SCREW ABUTMENT/FIXTURE 4.5

PROSTHETIC SCREW TEMPORARY CYLINDER/ABUTMENT

UNION SCREW IMPRESSION COPING/ABUTMENT

UNION SCREW REPLICA ABUTMENT/IMPRESSION COPING

UNION SCREW X LABORATORY TEMPORARY CYLINDER/REPLICA ABUTMENT

CODE

EF55F.3.5

EF55F

EF56AA

EF5730

EF5730RA

EF55LAB

○ Ø 3.5

○ Ø 4.0

○ Ø 4.5

○ Ø 5.0

○ Ø 5.5

KIT - ANGLED ABUTMENT 40° SINGLE TOOTH (AVAILABLE IN KIT OR SINGLE PIECES)



ANGLED ABUTMENT

EF40.3.5.ANG40



EF40.4.5.ANG40



TEMPORARY CYLINDER

EF44S.3.5-40



EF44S.4.5-40



IMPRESSION COPIN

EF61Apa40.3.5



EF61Apa40.4.5



REPLICA ABUTMENT

EF63AS40.3.5-12



EF63AS40.4.5-12

CASTABLE TEMPORARY
CYLINDER WAX-UP

EF44W.3.5-40



EF44W.4.5-40



PROTECTION CAP

EF36ANG.3.5



EF36ANG.4.5



KIT - ANGLED ABUTMENT 40° BRIDGE (AVAILABLE IN KIT OR SINGLE PIECES)



ANGLED ABUTMENT

EF41.3.5.ANG40



EF41.4.5.ANG40



TEMPORARY CYLINDER

EF44.3.5-40



EF44.4.5-40



IMPRESSION COPING

EF60Apa40.3.5



EF60Apa40.4.5



REPLICA ABUTMENT

EF63A40.3.5-12



EF63A40.4.5-12

CASTABLE TEMPORARY
CYLINDER WAX-UP

EF45W.3.5-40



EF45W.4.5-40



PROTECTION CAP

cod. EF35.3.5-20



EF35.4.5-20



SCREW KIT 40° SINGLE TOOTH AND BRIDGE

FIXING SCREW ABUTMENT/FIXTURE 3.5

FIXING SCREW ABUTMENT/FIXTURE 4.5

PROSTHETIC SCREW TEMPORARY CYLINDER/ABUTMENT

UNION SCREW IMPRESSION COPING/ABUTMENT

UNION SCREW REPLICA ABUTMENT/IMPRESSION COPING

UNION SCREW X LABORATORY TEMPORARY CYLINDER/REPLICA ABUTMENT

CODE

EF55F.3.5

EF55F

EF56AA

EF5740

EF5740RA

EF55LAB

 Ø 3.5

 Ø 4.0

 Ø 4.5

 Ø 5.0

 Ø 5.5

KIT - ANGLED ABUTMENT 45° SINGLE TOOTH (AVAILABLE IN KIT OR SINGLE PIECES)



ANGLED ABUTMENT	
EF40.3.5.ANG45	○
EF40.4.5.ANG45	○



TEMPORARY CYLINDER	
EF44S.3.5-45	○
EF44S.4.5-45	○



IMPRESSION COPING	
EF61Apa45.3.5	○
EF61Apa45.4.5	○



REPLICA ABUTMENT	
EF63AS45.3.5-12	○
EF63AS45.4.5-12	○



CASTABLE TEMPORARY CYLINDER WAX-UP	
EF44W.3.5-45	○
EF44W.4.5-45	○



PROTECTION CAP	
EF36ANG.3.5	○
EF36ANG.4.5	○

KIT - ANGLED ABUTMENT 45° BRIDGE (AVAILABLE IN KIT OR SINGLE PIECES)



ANGLED ABUTMENT	
EF41.3.5.ANG45	○
EF41.4.5.ANG45	○



TEMPORARY CYLINDER	
EF44.3.5-45	○
EF44.4.5-45	○



IMPRESSION COPING	
EF60Apa45.3.5	○
EF60Apa45.4.5	○



REPLICA ABUTMENT	
EF63A45.3.5-12	○
EF63A45.4.5-12	○



CASTABLE TEMPORARY CYLINDER WAX-UP	
EF45W.3.5-45	○
EF45W.4.5-45	○



PROTECTION CAP	
EF35.3.5-20	○
EF35.4.5-20	○

SCREW KIT 45° SINGLE TOOTH AND BRIDGE

FIXING SCREW ABUTMENT/FIXTURE 3.5

FIXING SCREW ABUTMENT/FIXTURE 4.5

PROSTHETIC SCREW TEMPORARY CYLINDER/ABUTMENT

UNION SCREW IMPRESSION COPING/ABUTMENT

UNION SCREW REPLICA ABUTMENT/IMPRESSION COPING

UNION SCREW X LABORATORY TEMPORARY CYLINDER/REPLICA ABUTMENT

CODE
EF55F.3.5
EF55F
EF56AA
EF5745
EF5745RA
EF55LAB

- Ø 3.5
- Ø 4.0
- Ø 4.5
- Ø 5.0
- Ø 5.5



APPENDIX

Useful information

Surgical kit **EASYFOR**

Its design was conceived in direct collaboration with industry operators.

The surgical tray, with its ergonomic design, achieves the best relationship between the surgical instruments contained and the size of the box.

It is light, easy to handle, stackable, compact, roomy.

Easily transportable, it guarantees the safety of the instruments contained, avoiding the loss of the same during handling.

The surgical tray is made of plastic materials with high impact resistance and suitable for autoclave sterilization. Plastic raw material is certified for more than 1000 sterilization cycles.

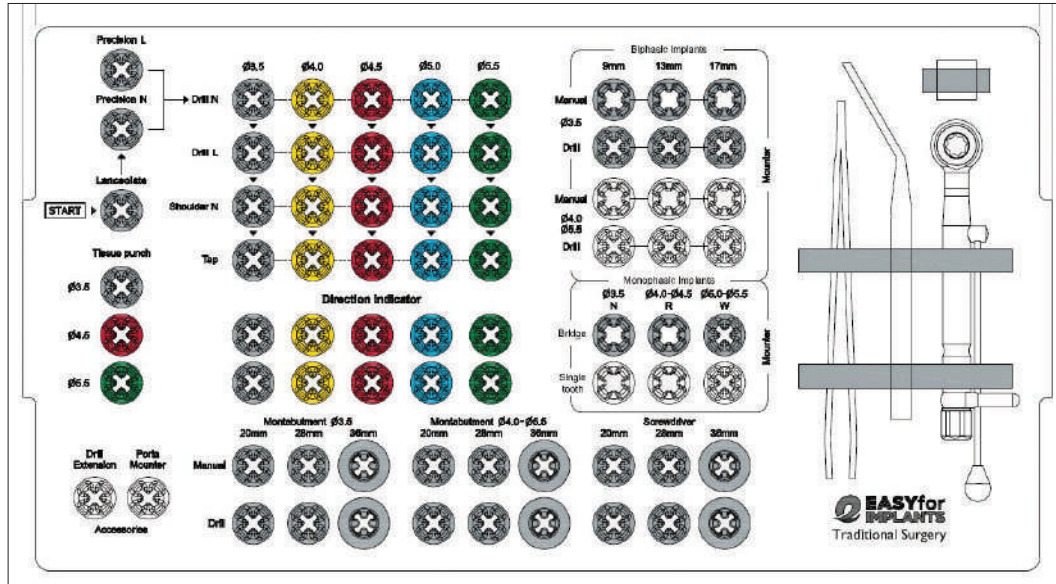
TECHNICAL FEATURES

- Product suitable for autoclave sterilization (134 ° / 2.15 Bar / 18 min);
- 2 tray opening positions;
- base locking system in closed box configuration;
- plastic material: RADEL.

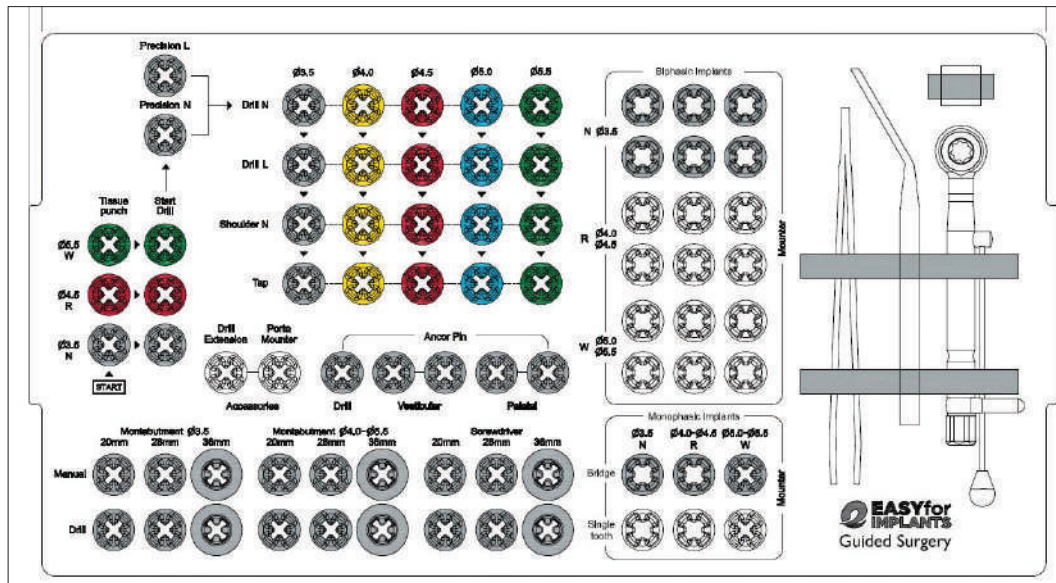
OPENING 90° E 210°



SURGICAL KIT TRADITIONAL - FOR BIPHASIC AND MONOPHASIC SYSTEM



SURGICAL KIT GUIDED SURGERY - FOR BIPHASIC AND MONOPHASIC SYSTEM



Tips for cleaning and sterilizing IMPLANT DRILLS

Warning! Implant drills are not delivered sterilized. Sterilize before use.

RECOMMENDATIONS

Stainless steel does not completely resist corrosion; Here are some tips:

- do not use chlorine or acid-based detergent or disinfectant (be careful with running water too much chlorine);
- avoid aldehyde solution, thanks to the product's ability to maintain proteins;
- meticulously eliminate all post-operative residues (blood, bones, etc.) on the drills, or inside the drills with internal irrigation. Use a nylon brush;
- avoid, as far as possible, collisions and contact with other tools (harmful to the quality of the surface and / or cutting power);
- do not wash the implantology drills in the same ultrasonic box with other instruments made of different materials;
- use suitable cleaning solutions. Respect the manufacturer's instructions for use;
- rinse and dry the burs immediately after the cleaning process (preferably use distilled water to rinse). It is necessary to be meticulous during drying;
- store the burs in clean and dry areas;
- moist heat sterilization in an autoclave at 134 °C (273 °F) - 18 minutes. Make sure that the elements inside the autoclave are not rusted;
- for drills with removable stops: these steps must be performed individually on the disassembled component.

The implant drills cannot be used indefinitely.



CLEANING AND STERILIZATION

of all components of the EASYfor implant line

NON- STERILE COMPONENTS

Cleaning and sterilization of Surgical Kits and boxes (Traditional & Guided Implantology)

- Disassemble the surgical kit and wash the tray with a cleaning solution. Rinse the tray with plenty of water;
- put the instruments in a container with detergent solution and then in ultrasound for about 10 minutes. Rinse thoroughly;
- remove all visible residues or bone fragments with a soft bristle brush and rinse thoroughly;
- rinse tools to remove soap and mineral residues (this is important to help prevent corrosion);
- dry the tools with a lint-free cloth; blow sterile compressed air into the hollow parts of the instruments;
- reposition the instruments in the appropriate positions in the surgical tray;
- wrap the kit in a double layer of medical paper for steam sterilization in an autoclave (in rolls or bags);
- sterilize the kit according to the "Sterilization table";
- for automatic cleaning, disinfection and drying, place instruments in an instrument basket and load the basket into the instrument washer, and start the cycle. Follow the special instructions provided by the manufacturer of the automatic tool washer. Several disinfectants are available on the market. ATTENTION: do not remove the surgical kit from the autoclave until the drying cycle is complete.

ATTENTION: the use of hydrogen peroxide or other oxidizing agents causes damage to the surface of the instruments.

Cleaning and sterilization of surgical drills and Wrench torque (Traditional & Guided Implantology)

The drills for the implants are reusable and must be replaced with new drills when wear causes a decrease in cutting performance or signs of discoloration.

EASYfor recommends replacing the tips after about 20 uses, depending on the density of the bone tissue.

- Cleaning: remove the bone tissues and other organic parts by immersing the instruments in cold water and then immerse the instruments for 5 minutes in a detergent solution (various detergents - disinfectants are available on the market) prepared with warm tap water. Then rub the outside with a brush suitable for soft bristles until all residues are removed. Then move on to the autoclave sterilization phase.

Cleaning and sterilization of the contra-angle

For cleaning and sterilization procedures refer to the specific instructions given by the manufacturer.

Other non-sterile components (e.g. impression copings, protective caps, etc.)

- Immerse the instruments in detergent and disinfectant solution diluted with lukewarm tap water for 5 minutes (for the dilution percentage, follow the manufacturer's regulations). Clean thoroughly with a soft brush and be sure to remove all organic residues.

STERILE COMPONENTS

All instruments and accessories that are supplied sterile by EASYfor have the wording “sterile” on the label. All components that are in open packages and that have never been used in the patient’s oral cavity, can be cleaned and sterilized in an autoclave, following the rules and procedures described in the previous section.

Dental Implants:

They are supplied by EASYfor sterile; the label shows the disposable symbol and must be used no later than the expiry date shown on the label itself. Do not use the system if you find a package that is not intact in all its parts.

N.B. Implants cannot and must never be re-sterilized.

Abutment, healing screw, cover screw, protection cap ecc.

These products are supplied non-sterile by EASYfor. It is necessary to steam sterilize these products in an autoclave for 5 minutes at 135 ° C.

TABLE CONTROL STERILIZATION

Functional testing and maintenance	Check the cleanliness of the instruments using a magnifying glass. If necessary, repeat the washing and disinfection process until the instruments are visibly clean
Packaging	Wrap the washed and cleaned instruments in packages suitable for autoclaving
Autoclave sterilization	Sterilize at a temperature of 135°C/274°F for approximately 20 minutes. Always use the dry cycle. Follow the instructions of the autoclave manufacturer
Storage	Store the tools in a clean, dry and dust-free place

Each dental office is responsible for the proper routine sterilization of instruments.

Place all instruments and implants on the sterile working field in the order in which they will be used.

This ensures a natural progression of the drill sequence.

EASYfor surgical kits are set up in this way.

PACKAGING and LABELING



Packaging is the process by which a closed wrapping is created, suitable for containing the devices to be sterilized and such as to maintain sterility for the expected time.

Blister packaging in a controlled contamination area (as required by ISO standards), allows to monitor the level of biocontamination of the product and its degree of cleanliness.

Materials: medical paper and transparent plastic film

















Identification system through the Color Code, to allow precise and immediate identification of the diameters of the product components



LEGENDA DEI SIMBOLI UTILIZZATI

	Attenzione, vedere istruzioni per l'uso
	Numero di lotto
	Codice
	Fabbricante
	Data di produzione
	Marcatura di conformità CE
	Sterile – Raggi Gamma
	Non utilizzare in caso di confezione danneggiata
	Prodotto monouso
	Data di scadenza
	Quantità

Guide to the TORQUE SECTION

DENTAL IMPLANTS		 MAX 35 Ncm
MINI IMPLANTS		 MAX 35 Ncm
ZYGOMATIC IMPLANTS		 MAX 35 Ncm
ABUTMENT & BULL ABUTMENT		 MAX 20 Ncm
HEALING SCREW COVER SCREW		 MAX 8 Ncm
PROTECTION CAP		 MAX 8 Ncm
FIXING SCREW PROSTHETIC SCREWS		 MAX 20 Ncm

The EASYfor method

Aimed at facilitating the doctor and the dental technician in achieving the result

GENERAL INFORMATION

WARNING

These implants are part of a complete treatment and should only be used in conjunction with the associated original instruments and components.

The user of EASYfor implants must determine whether the product is suitable for the specific patient and the particular circumstances of use.

The physician who uses EASYfor implants must keep himself constantly updated on developments relating to implants and their applications.

DESCRIPTION

Endosseous dental implant threaded in commercially pure biocompatible titanium grade four with sandblasted and acidified surface.

The implants after osseointegration are used as an anchor or support for the replacement of a single tooth or the entire arch or for anchoring a removable prosthesis

CONTRAINDICATIONS

Implants must not be applied:

- to patients with inadequate bone volume without first performing a bone regeneration procedure;
- to patients unsuitable for oral surgical procedures;
- to patients for whom the size or number or optimal position of the implants cannot be reached to provide a safe and suitable support to support functional loads.

INSTRUCTIONS FOR THE DOCTOR

It is strongly recommended that the doctor, even if experienced, always follows the EASYfor training program before using the implant. The first time you use the EASYfor implant it is advisable to work alongside a TUTOR expert in systematics. It is never possible to guarantee 100% success of an implant. Preoperative soft or hard tissue deficits can compromise the esthetic outcome. Before surgery, it is essential to subject the patient to a careful clinical and radiological examination. Carefully evaluate patients with local or systemic factors that may interfere with the healing process.

During drilling in the maxillary or mandibular bone, be careful not to damage the nerves and blood vessels, referring to the knowledge of anatomy and preoperative radiographs. Drilling beyond the intended depth can cause permanent injury or damage to vital nerves or structures.

It is advisable not to exceed angles of 25°/30 ° with respect to the occlusal plane when positioning the implants.

It is advisable to carry out regular short and long distance checks after implant placement

The implant drills cannot be used indefinitely.



SERVICES

All into bag SERVICE

White teeth and beautiful smile immediately!

Designed for those who want to perform prosthetically guided implantology activities but are not equipped with the appropriate software and applications.

1ST STEP

The clinician sends the CT
to EASYfor



2ND STEP

EASYfor sends to the clinician:

- Planning of the project 16 dots
- Guided surgery 16 dots
- 3D model 16 dots
- Implants and accessories 16 dots
- temporary prosthesis 16 dots



Didactics and **ECM CREDITIS**

FOR DOCTORS

- Basic and advanced planning courses
- Basic and advanced courses of implant surgery
- Basic and advanced guided surgery courses
- Basic and advanced courses with Synus lift live surgery

FOR DENTAL TECHNICIANS

- Basic and advanced courses from model to provisional in implantology prosthetically guided

FOR ASSISTANTS

- Basic and advanced courses of instrumentation in implant surgery



Help desk and **TECHNICAL SUPPORT**

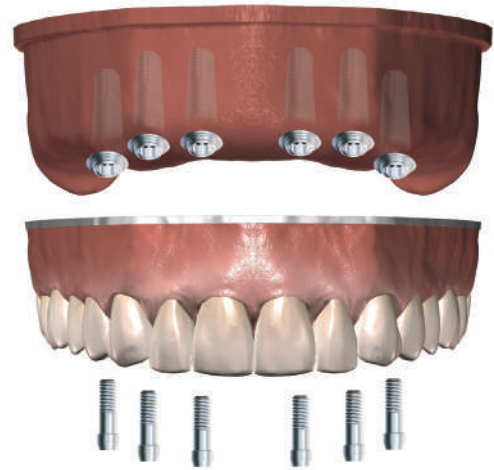
IL SERVICE OFFERS:

- qualified information on the product, its characteristics, methods of use, and implantology in general;
- online assistance on how to solve the most common implant problems;
- useful advice on how to guarantee long life to the prosthesis on personal implants;
- information on cultural events open to the public.



White Teeth and **BEAUTIFUL SMILE** immediately

“White Teeth and beautiful smile immediately” is a prosthetic implant surgery service aimed at those specialists who, faced with a particularly complex case of functional and aesthetic rehabilitation of one of their patients, intend to make use of the experience, competence and reliability gained by the team of the policlinico dottori Fornengo to achieve their goal in just one day: to give the patient a smile and the function lost over time.



SHOP online

Our full line of products can be ordered 24/7 through the Easyfor website.

To order the products please identify the product, enter the required quantity and then add the products to the cart.



prodotti-implantologia-medi... x
Sicuro | https://www.easyfor.it

EASYfor

Accesso Carrello

EASYfor MEDICAL DEVICE

EASYfor | Implants | Work Solutions | Educational | Download | E-COMMERCE

ALTA QUALITÀ MADE IN ITALY

EASYfor Medical Device è un'azienda italiana specializzata in implantologia dentale in grado di soddisfare tutte le esigenze di professionisti, laboratori odontotecnici e pazienti. Il nostro obiettivo è fornire all'odontoiatra un servizio completo, dal prodotto alla consulenza, dalla didattica al tutoraggio clinico.

WWW.EASYFOR.IT



Registered office: via San Firmino, 31 - 10070 Balangero (TO)
Operational headquarters: C.so Lancieri, 13/L - 11100 Aosta (AO)
Commercial manager: +39 329 625 43 93

www.easyfor.it