

**D3-D4 MONOFASICO**

- Ø 3.5
- Ø 4.0
- Ø 4.5
- Ø 5.0
- Ø 5.5

**NORMAL**

|   | 8 mm        | 9 mm        | 10 mm        | 11 mm        | 12 mm        |
|---|-------------|-------------|--------------|--------------|--------------|
| ○ | EF14S.3.5-8 | EF14S.3.5-9 | EF14S.3.5-10 | EF14S.3.5-11 | EF14S.3.5-12 |
| ○ | EF14S.4.0-8 | EF14S.4.0-9 | EF14S.4.0-10 | EF14S.4.0-11 | EF14S.4.0-12 |
| ○ | EF14S.4.5-8 | EF14S.4.5-9 | EF14S.4.5-10 | EF14S.4.5-11 | EF14S.4.5-12 |
| ○ | EF14S.5.0-8 | EF14S.5.0-9 | EF14S.5.0-10 | EF14S.5.0-11 | EF14S.5.0-12 |
| ○ | EF14S.5.5-8 | EF14S.5.5-9 | EF14S.5.5-10 | EF14S.5.5-11 | EF14S.5.5-12 |

**LONG**

|   | 13 mm        | 14 mm        | 15 mm        | 16 mm        | 18 mm        |
|---|--------------|--------------|--------------|--------------|--------------|
| ○ | EF14S.3.5-13 | EF14S.3.5-14 | EF14S.3.5-15 | EF14S.3.5-16 | EF14S.3.5-18 |
| ○ | EF14S.4.0-13 | EF14S.4.0-14 | EF14S.4.0-15 | EF14S.4.0-16 | EF14S.4.0-18 |
| ○ | EF14S.4.5-13 | EF14S.4.5-14 | EF14S.4.5-15 | EF14S.4.5-16 | EF14S.4.5-18 |
| ○ | EF14S.5.0-13 | EF14S.5.0-14 | EF14S.5.0-15 | EF14S.5.0-16 | EF14S.5.0-18 |
| ○ | EF14S.5.5-13 | EF14S.5.5-14 | EF14S.5.5-15 | EF14S.5.5-16 | EF14S.5.5-18 |



INTRODUZIONE

LINEA  
BIFASICA

LINEA  
MONOFASICA

ALTRI  
IMPIANTI

KIT  
ABUTMENT

APPENDICE

SERVIZI

CAPPETTA PROTEZIONE  
ABUTMENT DENTE SINGOLO



| CODICE   |
|----------|
| EF36.3.5 |
| EF36.4.0 |
| EF36.4.5 |
| EF36.5.0 |
| EF36.5.5 |



○ Ø 3.5

○ Ø 4.0

○ Ø 4.5

○ Ø 5.0

○ Ø 5.5

## FRESE PER IMPIANTO D3-D4 (CHIRURGIA TRADIZIONALE)

- Ø 3.5
- Ø 4.0
- Ø 4.5
- Ø 5.0
- Ø 5.5



### UNIVERSALE LANCEOLATA

EF64

### UNIVERSALE PRECISIONE 2 MM

EF65.12

EF65.16

### FRESA GRADINO

| NORMAL          | LONG            |   |
|-----------------|-----------------|---|
| EF67.2.0/2.7.12 | EF67.2.0-2.7.16 | ○ |
| EF67.2.5/3.0.12 | EF67.2.5-3.0.16 | ○ |
| EF67.3.0/3.5.12 | EF67.3.0-3.5.16 | ○ |
| EF67.3.5/4.0.12 | EF67.3.5-4.0.16 | ○ |
| EF67.4.0/4.5.12 | EF67.4.0-4.5.16 | ○ |

### FRESA (NORMAL)

| CODICE SPALLA |   |
|---------------|---|
| EF67.3.5      | ○ |
| EF67.4.0      | ○ |
| EF67.4.5      | ○ |
| EF67.5.0      | ○ |
| EF67.5.5      | ○ |

### MASCHIATORE

| CODICE      |   |
|-------------|---|
| EF83.3.5-D3 | ○ |
| EF83.4.0-D3 | ○ |
| EF83.4.5-D3 | ○ |
| EF83.5.0-D3 | ○ |
| EF83.5.5-D3 | ○ |



## FRESE PER IMPIANTO D3-D4 (CHIRURGIA GUIDATA)

- Ø 3.5
- Ø 4.0
- Ø 4.5
- Ø 5.0
- Ø 5.5

### FRESA PER ANCOR PIN

EF64.AP

### UNIVERSALE PRECISIONE 2 MM

EF65G.12

EF65G.16

### START DRILL

| CODICE     |   |
|------------|---|
| EF.START.N | ○ |
| EF.START.R | ○ |
| EF.START.W | ○ |

### FRESA GRADINO

| NORMAL           | LONG             |   |
|------------------|------------------|---|
| EF67G.2.0/2.7.12 | EF67G.2.0/2.7.16 | ○ |
| EF67G.2.5/3.0.12 | EF67G.2.5/3.0.16 | ○ |
| EF67G.3.0/3.5.12 | EF67G.3.0/3.5.16 | ○ |
| EF67G.3.5/4.0.12 | EF67G.3.5/4.0.16 | ○ |
| EF67G.4.0/4.5.12 | EF67G.4.0/4.5.16 | ○ |

### FRESA (NORMAL)

| CODICE<br>SPALLA |   |
|------------------|---|
| EF67G.3.5        | ○ |
| EF67G.4.0        | ○ |
| EF67G.4.5        | ○ |
| EF67G.5.0        | ○ |
| EF67G.5.5        | ○ |

### MASCHIATORE

| CODICE       |   |
|--------------|---|
| EF83G.3.5-D3 | ○ |
| EF83G.4.0-D3 | ○ |
| EF83G.4.5-D3 | ○ |
| EF83G.5.0-D3 | ○ |
| EF83G.5.5-D3 | ○ |

## ACCESSORI CHIRURGICI

○ Ø 3.5  
○ Ø 4.0  
○ Ø 4.5  
○ Ø 5.0  
○ Ø 5.5



### MOUNTER TRAPANO PER CHIRURGIA TRADIZIONALE

| 9 mm            | 13 mm            | 17 mm            |
|-----------------|------------------|------------------|
| EF91T.3.5-9     | EF91T.3.5-13     | EF91T.3.5-17     |
| EF91T.4.0/5.5-9 | EF91T.4.0/5.5-13 | EF91T.4.0/5.5-17 |



### MOUNTER MANUALE PER CHIRURGIA TRADIZIONALE

| 9 mm           | 13 mm           | 17 mm           |
|----------------|-----------------|-----------------|
| EF91.3.5-9     | EF91.3.5-13     | EF91.3.5-17     |
| EF91.4.0/5.5-9 | EF91.4.0/5.5-13 | EF91.4.0/5.5-17 |



### MOUNTER PER FIXTURE CON CHIRURGIA GUIDATA

| CODICE        |
|---------------|
| EF91G.3.5     |
| EF91G.4.0/4.5 |
| EF91G.5.0/5.5 |



### MOUNTER PER FIXTURE CHIRURGIA GUIDATA SPECIAL

| +2 mm      | +3 mm      | +5 mm      |
|------------|------------|------------|
| EF91G.N-S2 | EF91G.N-S3 | EF91G.N-S5 |
| EF91G.R-S2 | EF91G.R-S3 | EF91G.R-S5 |
| EF91G.W-S2 | EF91G.W-S3 | EF91G.W-S5 |



### CACCIAVITE TRAPANO

| 20 mm    | 28 mm    | 36 mm    |
|----------|----------|----------|
| EF76T-20 | EF76T-28 | EF76T-36 |



## CACCIAVITE MANUALE

| 20 mm    | 28 mm    | 36 mm    |
|----------|----------|----------|
| EF76M-20 | EF76M-28 | EF76M-36 |



## CRICCHETTO TORQUE 75 Nw

EF80



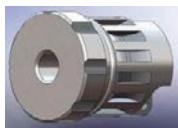
## CRICCHETTO FISSO

EF80F



## ADATTATORE CRICCHETTO PER MOUNTER ESAGONALE

EF60AD



## ADATTATORE CRICCHETTO PER CACCIAVITE

EF60ADT



## PROLUNGA TRAPANO

EF78



## PORTA MOUNTER

EF82



## DIREZIONATORE

| CODICE   |   |
|----------|---|
| EF84.3.5 | ○ |
| EF84.4.0 | ○ |
| EF84.4.5 | ○ |
| EF84.5.0 | ○ |
| EF84.5.5 | ○ |



## BISTURI CIRCOLARE

| CODICE   |   |
|----------|---|
| EF72.3.5 | ○ |
| EF72.4.0 | ○ |
| EF72.4.5 | ○ |
| EF72.5.0 | ○ |
| EF72.5.5 | ○ |

## CHIRURGIA COMPUTER GUIDATA

### RIDUTTORI CONICI - CILINDRICI



| Ø N       | Ø R       | Ø W       |
|-----------|-----------|-----------|
| EF70N.2.0 | EF70R.2.0 | EF70W.2.0 |
| EF70N.2.7 | EF70R.2.7 | EF70W.2.7 |
|           | EF70R.3.2 | EF70W.3.2 |
|           | EF70R.3.7 | EF70W.3.7 |
|           |           | EF70W.4.2 |
|           |           | EF70W.4.7 |

### RIDUTTORI D3-D4



| Ø N       | Ø R       | Ø W       |
|-----------|-----------|-----------|
| EF71N.2.0 | EF71R.2.0 | EF71W.2.0 |
| EF71N.2.5 | EF71R.2.5 | EF71W.2.5 |
|           | EF71R.3.0 | EF71W.3.0 |
|           | EF71R.3.5 | EF71W.3.5 |
|           |           | EF71W.4.0 |
|           |           | EF71W.4.5 |



### MANICO PER RIDUTTORI

EF98



### ANCOR PIN

| VESTIBOLARE | PALATALE   |
|-------------|------------|
| EF.Ancor-V  | EF.Ancor-P |

**FRESA PER ANCOR PIN**

EF64.AP

**MISURATORE PROFONDITÀ**

EF3

**PINZETTA IN TITANIO**

EF2

## SLEEVE



| CODICE         |
|----------------|
| EF64SL.3.5     |
| EF64SL.4.0-4.5 |
| EF64SL.5.0-5.5 |



## CILINDRO GUIDA



| CODICE        |
|---------------|
| EF86M.3.5     |
| EF86M.4.0-4.5 |
| EF86M.5.0-5.5 |



## VITE FISSAGGIO



| CODICE         |
|----------------|
| EF86MV.3.5     |
| EF86MV.4.0-4.5 |
| EF86MV.5.0-5.5 |



## CILINDRO GUIDA SPECIAL



| 2 mm       | 3 mm       | 5 mm       |
|------------|------------|------------|
| EF86M.N-S2 | EF86M.N-S3 | EF86M.N-S5 |
| EF86M.R-S2 | EF86M.R-S3 | EF86M.R-S5 |
| EF86M.W-S2 | EF86M.W-S3 | EF86M.W-S5 |



## VITE FISSAGGIO SPECIAL



| 2 mm        | 3 mm        | 5 mm        |
|-------------|-------------|-------------|
| EF86MV.N-S2 | EF86MV.N-S3 | EF86MV.N-S5 |
| EF86MV.R-S2 | EF86MV.R-S3 | EF86MV.R-S5 |
| EF86MV.W-S2 | EF86MV.W-S3 | EF86MV.W-S5 |



## TRANSFERT IMPRONTA

- Ø 3.5
- Ø 4.0
- Ø 4.5
- Ø 5.0
- Ø 5.5

### Transfer impronta DENTE SINGOLO

Porta impronte chiuso

| CODICE    |   |
|-----------|---|
| EF61A.3.5 | ○ |
| EF61A.4.0 | ○ |
| EF61A.4.5 | ○ |
| EF61A.5.0 | ○ |
| EF61A.5.5 | ○ |

### DENTE SINGOLO ABUTMENT

Porta impronte aperto



| CODICE      |   |
|-------------|---|
| EF61Apa.3.5 | ○ |
| EF61Apa.4.0 | ○ |
| EF61Apa.4.5 | ○ |
| EF61Apa.5.0 | ○ |
| EF61Apa.5.5 | ○ |

## VITI PER TRANSFERT IMPRONTA

Porta impronte aperto e chiuso

DENTE SINGOLO Ø 3.5

DENTE SINGOLO Ø 4.0/5.5

| CODICE         |
|----------------|
| EF57DS.3.5     |
| EF57DS.4.0-5.5 |

### REPLICA ABUTMENT DENTE SINGOLO



| CODICE        |   |
|---------------|---|
| EF63AS.3.5-12 | ○ |
| EF63AS.4.0-12 | ○ |
| EF63AS.4.5-12 | ○ |
| EF63AS.5.0-12 | ○ |
| EF63AS.5.5-12 | ○ |

## TEMPORARY CYLINDER

- Ø 3.5
- Ø 4.0
- Ø 4.5
- Ø 5.0
- Ø 5.5

### TI TEMPORARY CYLINDER PONTE



| CODICE    |   |
|-----------|---|
| EF44M.3.5 | ○ |
| EF44M.4.0 | ○ |
| EF44M.4.5 | ○ |
| EF44M.5.0 | ○ |
| EF44M.5.5 | ○ |

### TI TEMPORARY CYLINDER DENTE SINGOLO



| CODICE    |   |
|-----------|---|
| EF44S.3.5 | ○ |
| EF44S.4.0 | ○ |
| EF44S.4.5 | ○ |
| EF44S.5.0 | ○ |
| EF44S.5.5 | ○ |

### TEMPORARY CYLINDER PONTE (ACCIAIO)



| CODICE          |   |
|-----------------|---|
| EF44M.3.5-steel | ○ |
| EF44M.4.0-steel | ○ |
| EF44M.4.5-steel | ○ |
| EF44M.5.0-steel | ○ |
| EF44M.5.5-steel | ○ |

### TEMPORARY CYLINDER DENTE SINGOLO (ACCIAIO)



| CODICE          |   |
|-----------------|---|
| EF44S.3.5-steel | ○ |
| EF44S.4.0-steel | ○ |
| EF44S.4.5-steel | ○ |
| EF44S.5.0-steel | ○ |
| EF44S.5.5-steel | ○ |

## TEMPORARY CYLINDER CALCINABILE PER WAX-UP

### TEMPORARY CYLINDER CALCINABILE PER WAX-UP PONTE



| 20 mm      |   |
|------------|---|
| EF45Mw.3.5 | ○ |
| EF45Mw.4.0 | ○ |
| EF45Mw.4.5 | ○ |
| EF45Mw.5.0 | ○ |
| EF45Mw.5.5 | ○ |

- Ø 3.5
- Ø 4.0
- Ø 4.5
- Ø 5.0
- Ø 5.5

### TEMPORARY CYLINDER CALCINABILE PER WAX-UP DENTE SINGOLO



| CODICE    |   |
|-----------|---|
| EF44w.3.5 | ○ |
| EF44w.4.0 | ○ |
| EF44w.4.5 | ○ |
| EF44w.5.0 | ○ |
| EF44w.5.5 | ○ |

### COMPONENTE CALCINABILE



| CODICE      |         |
|-------------|---------|
| EFW.3.5     | ○       |
| EFW.4.0-5.5 | ○ ○ ○ ○ |

## ACCESSORI

- Ø 3.5
- Ø 4.0
- Ø 4.5
- Ø 5.0
- Ø 5.5



### CACCIAVITE TRAPANO

| 20 mm    | 28 mm    | 36 mm    |
|----------|----------|----------|
| EF76T-20 | EF76T-28 | EF76T-36 |



### CACCIAVITE MANUALE

| 20 mm    | 28 mm    | 36 mm    |
|----------|----------|----------|
| EF76M-20 | EF76M-28 | EF76M-36 |

## PRODOTTI PER PROTOTIPAZIONE



### TEMPORARY CYLINDER SCAN BODIES PONTE

| CODICE       |   |
|--------------|---|
| EF44scan.3.5 | ○ |
| EF44scan.4.0 | ○ |



### TEMPORARY CYLINDER SCAN BODIES DENTE SINGOLO

| CODICE        |   |
|---------------|---|
| EF44Sscan.3.5 | ○ |
| EF44Sscan.4.0 | ○ |



### VITE PROTESICA

TEMPORARY CYLINDER DENTE SINGOLO  
TEMPORARY CYLINDER X WAX-UP DENTE SINGOLO

EF55



### VITE PROTESICA

TEMPORARY CYLINDER DENTE SINGOLO  
TEMPORARY CYLINDER X WAX-UP DENTE SINGOLO

EF55-3.5



## VITI PER TRANSFERT IMPRONTA

Porta impronte aperto e chiuso

DENTE SINGOLO Ø 3.5

DENTE SINGOLO Ø 4.0/5.5

CODICE

EF57DS.3.5

EF57DS.4.0-5.5

